

DOUGLAS

DOUGLAS COLLEGE

CAMPUS GUIDE

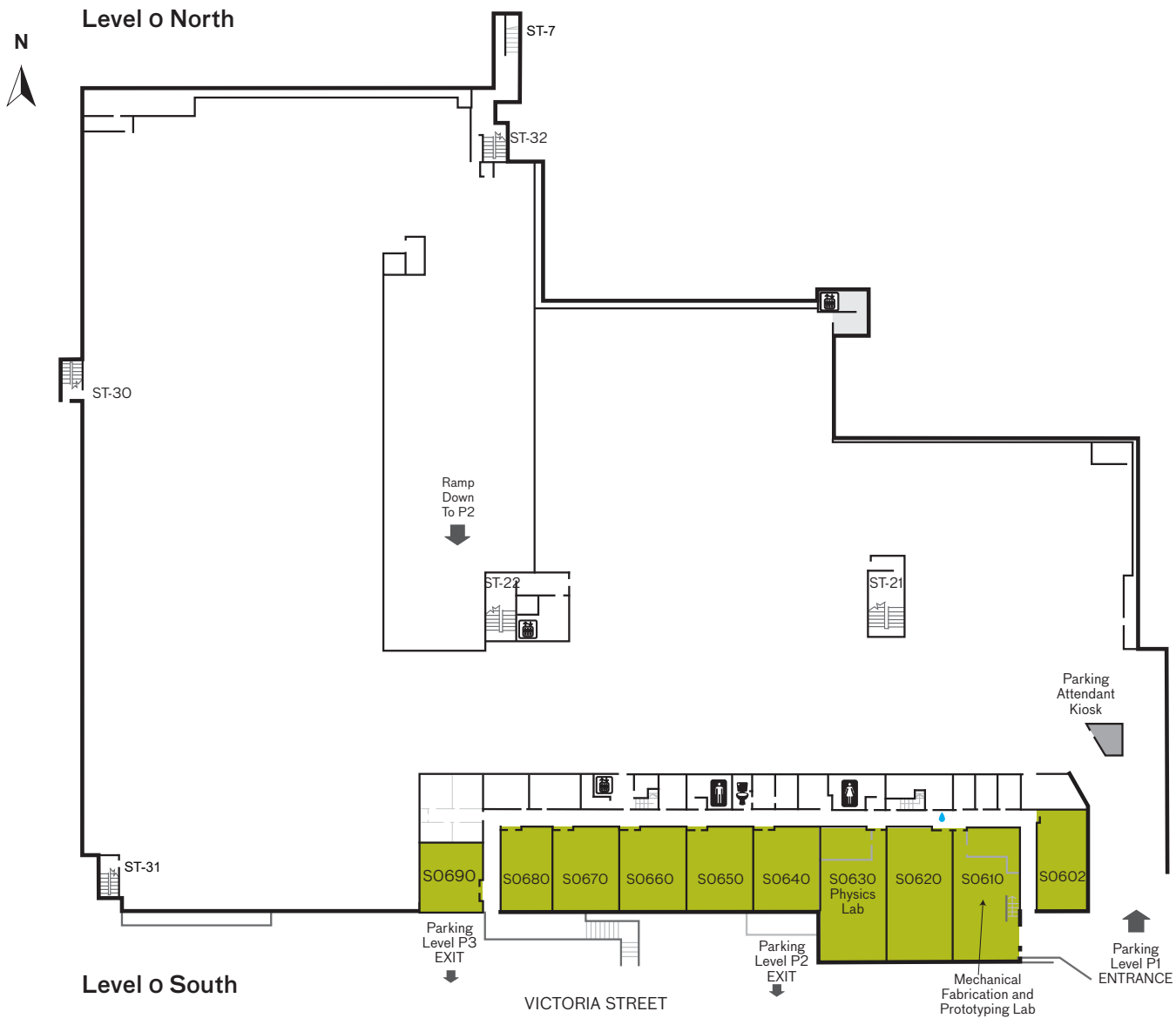
**NEW WESTMINSTER CAMPUS
ANVIL OFFICE TOWER
2018-2019**

douglascollege.ca




DOUGLAS COLLEGE

o600 and Parking Level P1 Floor Plan New Westminster Campus

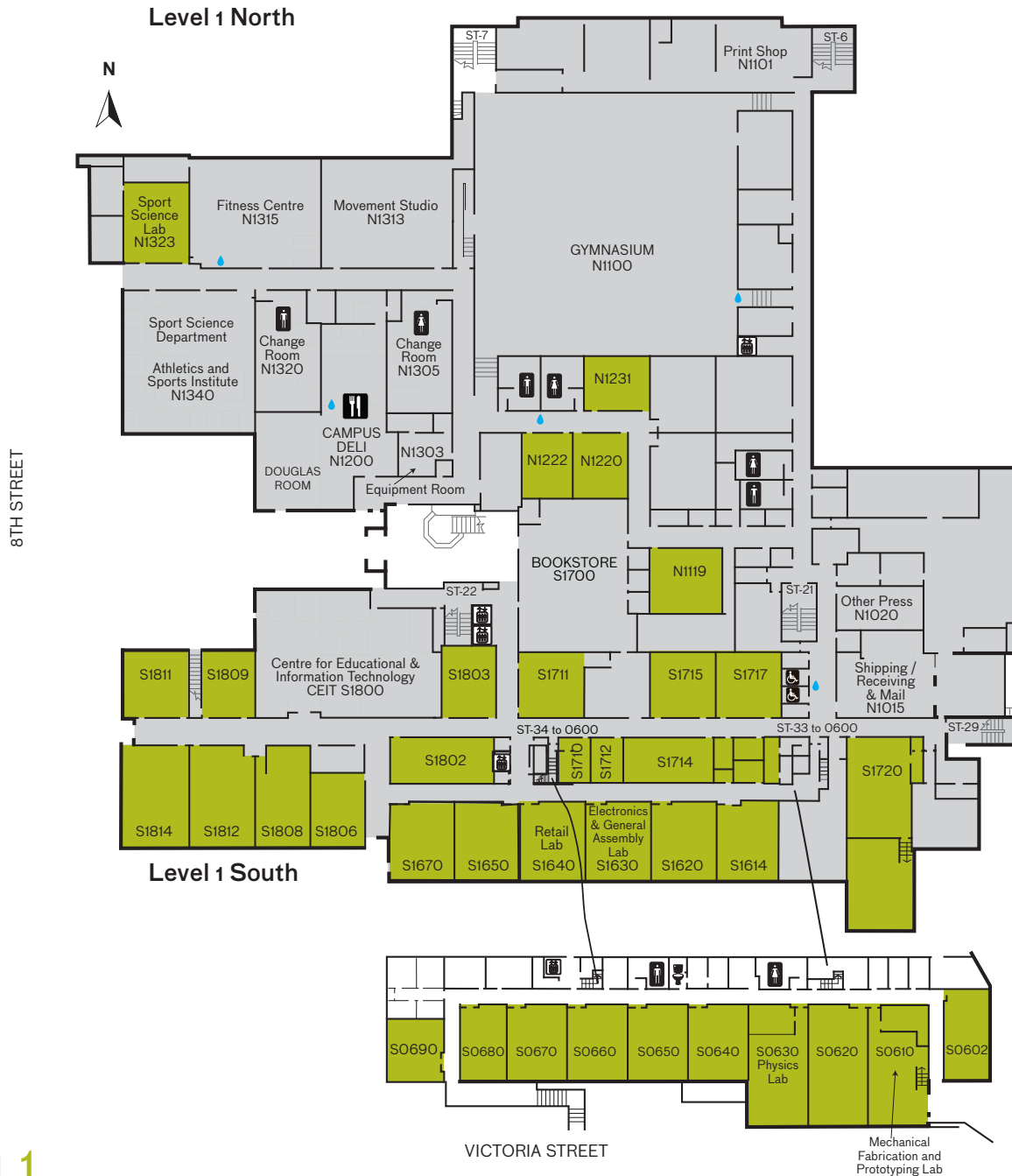


LEVEL Zero / PARKING LEVEL 1


- so610 Mechanical Fabrication and Prototyping Lab
- so630 Electronics and Electronic Assembly Lab
-  Water Fill Station

Zero and First Floor New Westminster Campus

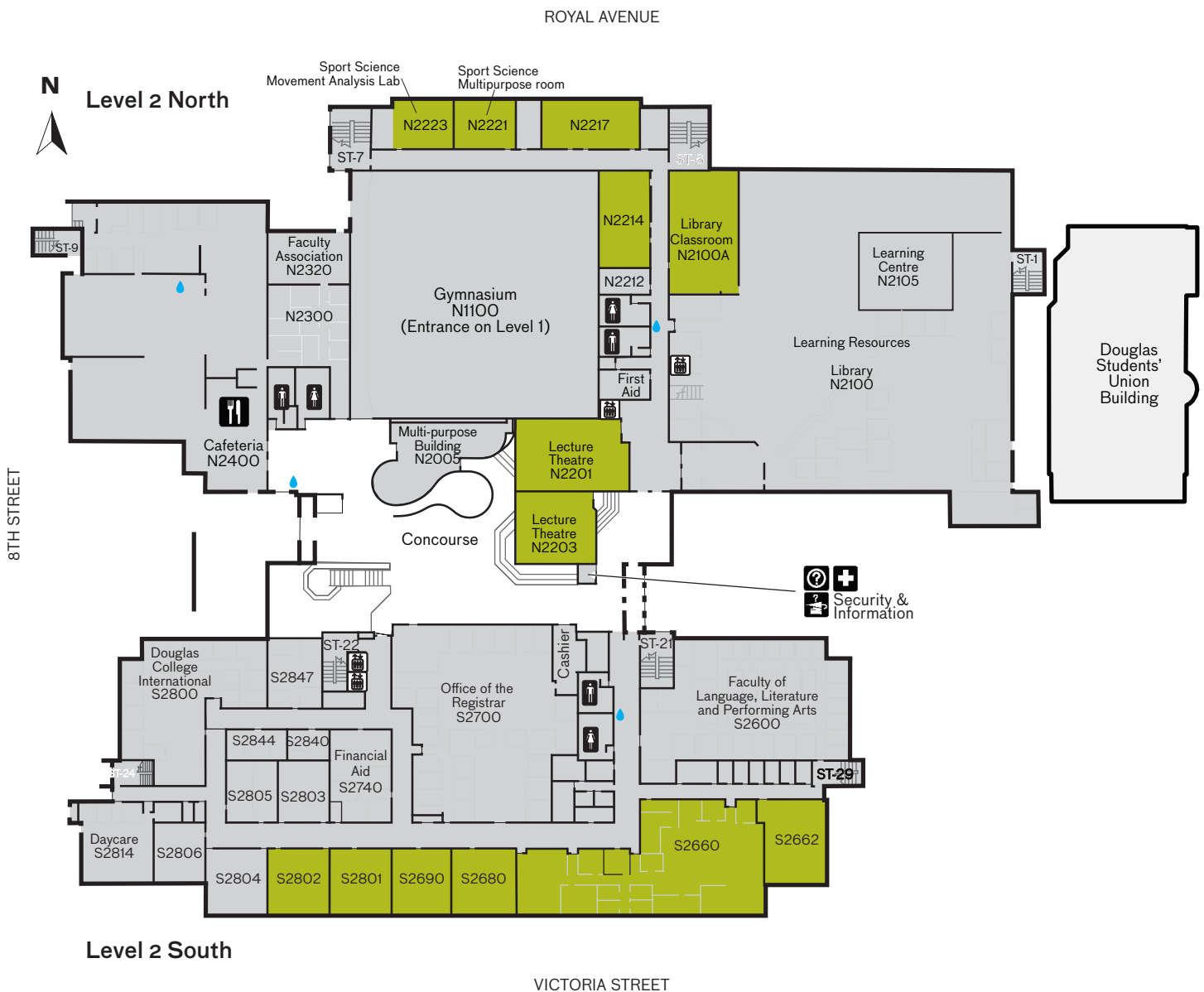
ROYAL AVENUE



LEVEL 1

N1015	Mail, Shipping and Receiving	N1305	Women's change rooms
N1020	Other Press	N1315	Fitness Centre
N1100	Gymnasium	N1320	Men's change rooms
N1101	Printshop	S0610	Mechanical Fabrication and Prototyping Lab
N1200	Campus Deli/Douglas Room	S0630	Physics Lab
N1313	Movement Studio	S1640	Retail Lab
N1315	Fitness Centre	S1700	Bookstore
N1323	Sport Science Lab	S1800	Centre for Educational and Information Technology (CEIT)
N1340	Sport Science Department		
N1340	Athletics and Sports Institute		
	Water Fill Station		

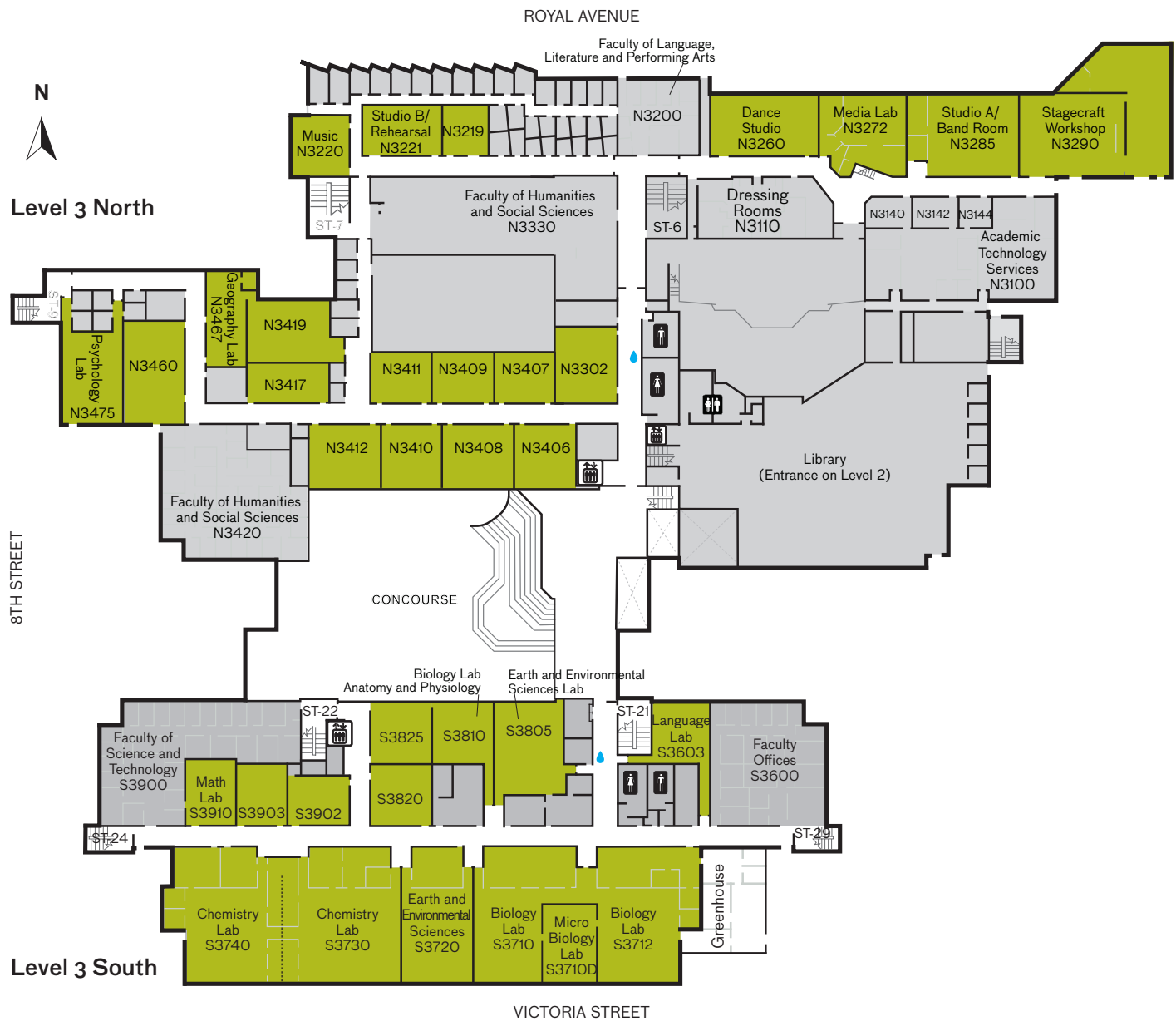
Second Floor New Westminster Campus



LEVEL 2

N1100	Gymnasium	s2600	Faculty of Language, Literature and Performing Arts
N2100	Learning Resources and Library	s2700	Office of the Registrar
N2105	Learning Centre	s2740	Financial Aid
N2201	Lecture Theatre	s2786	Cashier
N2203	Lecture Theatre	s2800	Douglas College International
n2203A	Security Kiosk	s2814	Daycare Centre
N2221	Sport Science Multipurpose room	s2844	Career Centre
N2223	Sport Science Movement Analysis Lab		Water Fill Station
N2320	Faculty Association (DCFA)		
N2400	Cafeteria		

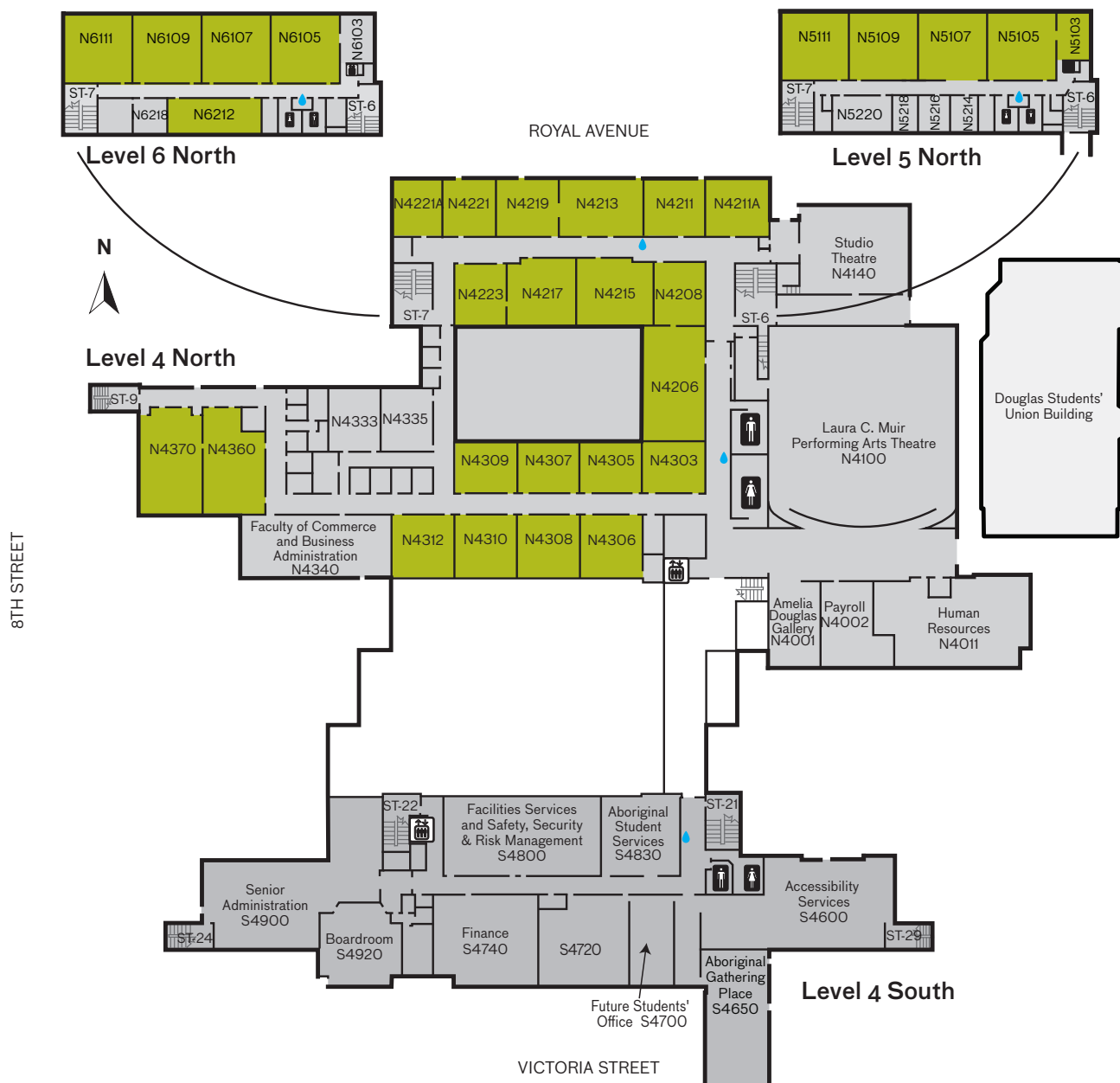
Third Floor New Westminster Campus



LEVEL 3

N3100	Academic Technology Services	S3603	Language Lab
N3200	Faculty of Language, Literature and Performing Arts	S3710, S3712	Biology Lab
N3220	Music Lab	S3720	Earth and Environmental Sciences
N3221	Studio B/Rehearsal	S3730, S3740	Chemistry Lab
N3219	Studio B Control	S3805	Earth and Environmental Sciences Lab
N3260	Dance Studio	S3810	Biology Lab; Anatomy and Physiology Lab
N3272	Media Lab	S3900	Faculty of Science and Technology
N3285	Studio A/Band Room	S3910	Math Lab
N3290	Stagecraft Workshop	Water Fill Station	
N3330-3420	Faculty of Humanities and Social Sciences		
N3467	Geography Lab		
N3475	Psychology Lab		

Fourth, Fifth and Sixth Floor New Westminster Campus



LEVELS 4, 5 & 6

N4001	Amelia Douglas Gallery	s4650	Aboriginal Gathering Place
N4002	Payroll	s4700	Future Students' Office
N4011	Human Resources	s4740	Finance
N4100	Laura C. Muir Performing Arts Theatre	s4800	Facilities Services; Safety, Security & Risk Management; Purchasing;
N4140	Studio Theatre	s4830	Aboriginal Student Services
N4340	Faculty of Commerce and Business Administration	s4900	Senior Administration
s4600	Student Services	s4920	Boardroom
	• Counselling	• Accessability Services	Water Fill Station

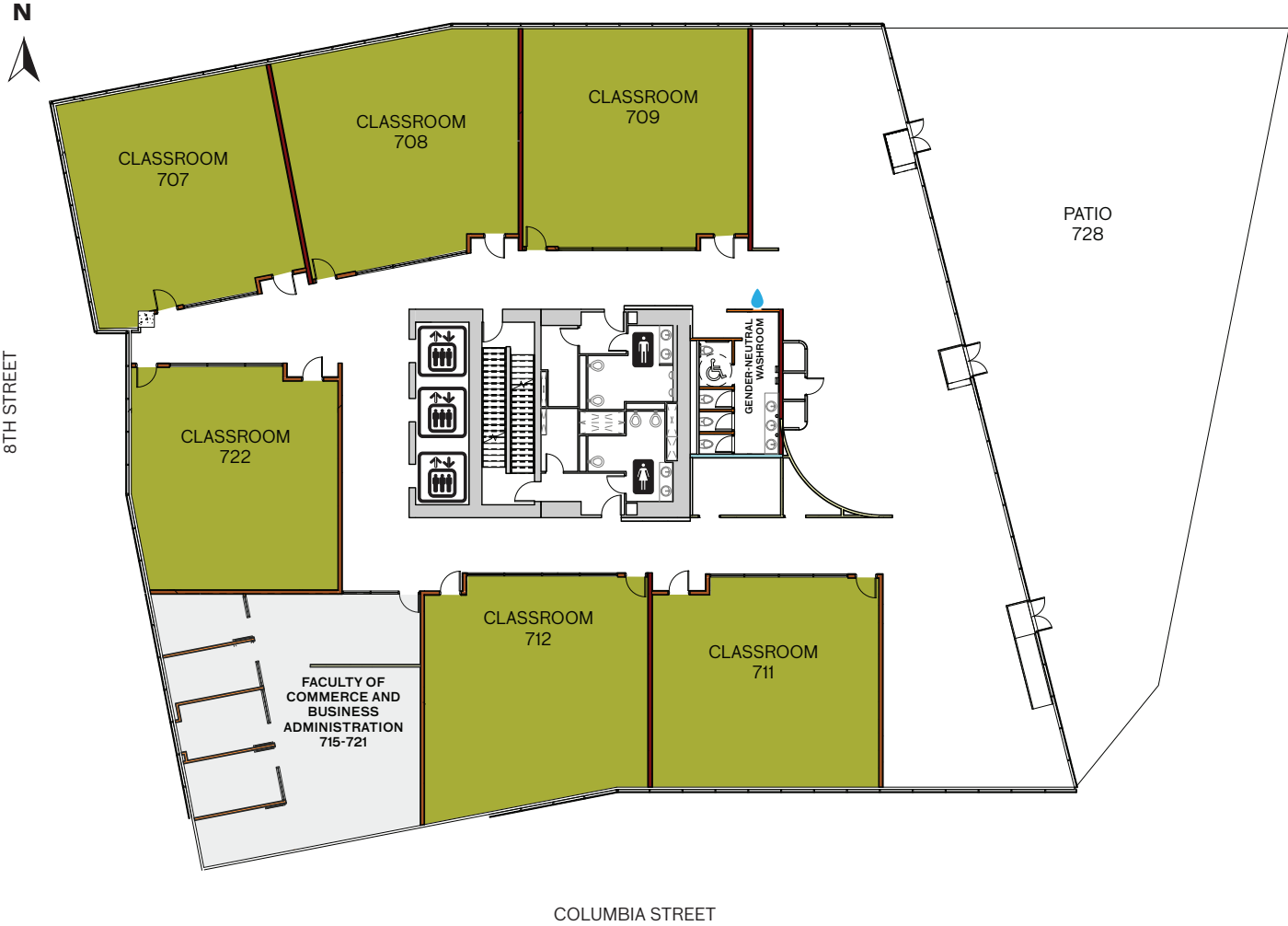
Sixth Floor Anvil Office Tower



ANVIL 6th FLOOR

- 639 Security
- 627-638 Faculty of Commerce and Business
- Administration
- Water Fill Station

Seventh Floor Anvil Office Tower



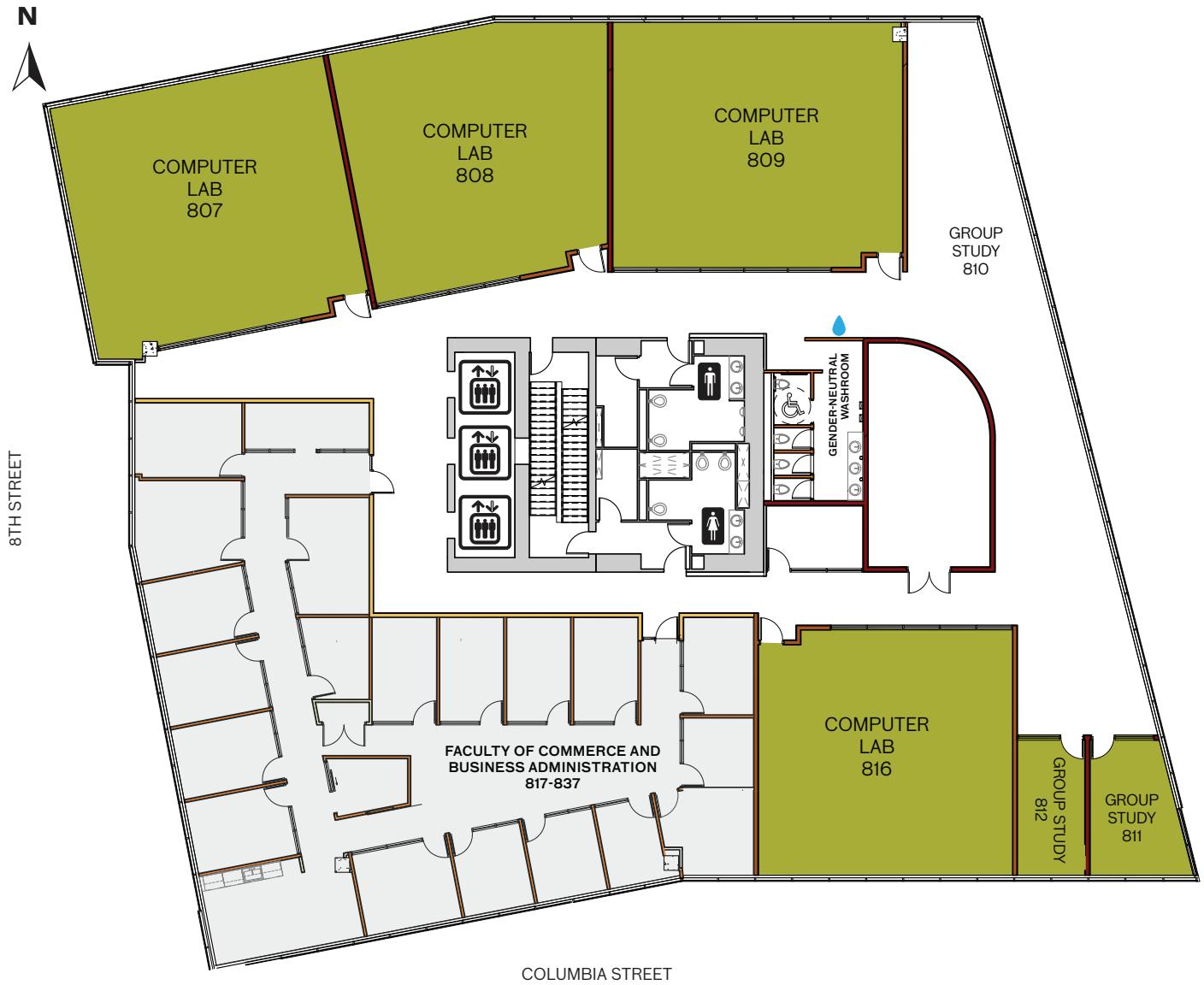
ANVIL 7th FLOOR

715-721

Douglas College International
Business Development Department
Water Fill Station



Eighth Floor Anvil Office Tower



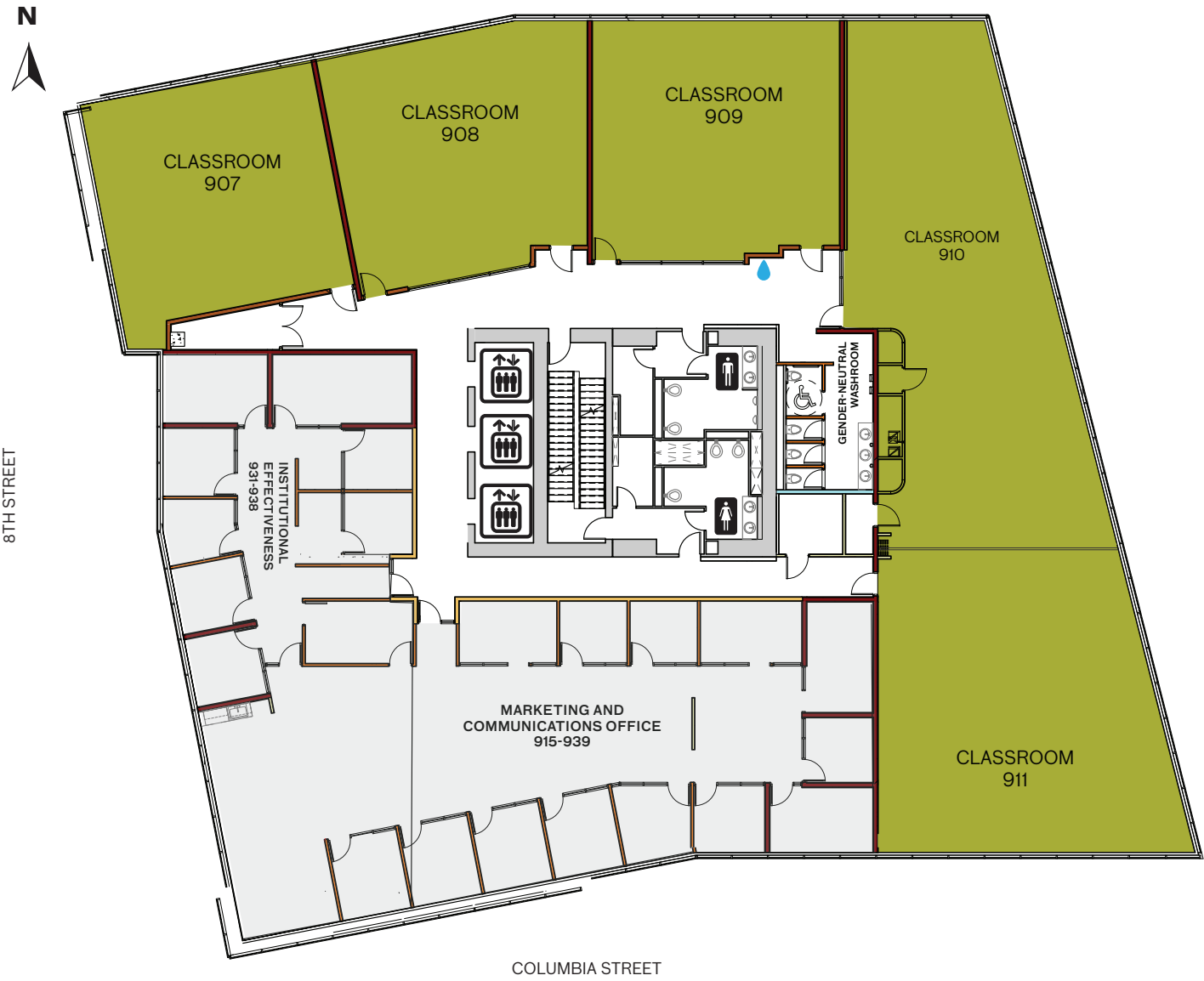
ANVIL 8th FLOOR

817-837


Faculty of Commerce and Business
Administration
Water Fill Station



Ninth Floor Anvil Office Tower



ANVIL 9th FLOOR

- 915-939 Marketing and Communications Office
- 931-939 Institutional Effectiveness
-  Water Fill Station



CAMPUS STREET ADDRESSES

700 Royal Avenue (at Eighth Street), New Westminster, B.C.

Anvil Office Tower: 11 Eighth Street, Floors 6-9, New Westminster, B.C.

MAILING ADDRESS (FOR ALL CAMPUSES)

PO Box 2503, New Westminster, B.C., V3L 5B2

CENTRAL SWITCHBOARD

604 527 5400

CAMPUS HOURS

Monday to Friday	6:30am - 11pm
Saturday	6:30am - 7pm
Sunday	8am - 6pm (limited access*)
Holidays	Limited access*

* Access at Level 2 by security. Valid and current Douglas College ID must be shown to security. Only applies to New Westminster Campus.

ACCESS FOR VISITORS OR STUDENTS WITH DISABILITIES

Reserved parking for people with disabilities is available in the above ground and underground parking lots at the New Westminster Campus. Public paid parking is available at Anvil.

INFORMATION

Inquiries should be made at Security in the Concourse (second level) at the New Westminster Campus and on the 6th floor at Anvil.

ROOM NUMBERS

The New Westminster Campus is divided into two blocks, North and South. Each room number precedes with the floor number; Anvil occupies floors 6-9. Classrooms at the New Westminster Campus and Anvil are labelled in green on these maps.

FOOD SERVICE

Meals and snacks are available in the cafeteria located on the north-west side of the Concourse (second floor) or at the Campus Deli on the north-west side of the Concourse (first floor).

SMOKE-FREE CAMPUS

Douglas College is a smoke-free campus. The policy prohibits smoking, vaping, and chewing tobacco on all Douglas College campuses and sites, including parkades.

SECURITY

For all fire, police, ambulance and/or first aid emergencies, contact campus security. Security and First Aid Kiosk at the New Westminster Campus are located in the Concourse (second floor) and on the 6th floor at Anvil. From internal College telephones, call local 2400 or 604 527 5405 or 604 218 4925 (cell).