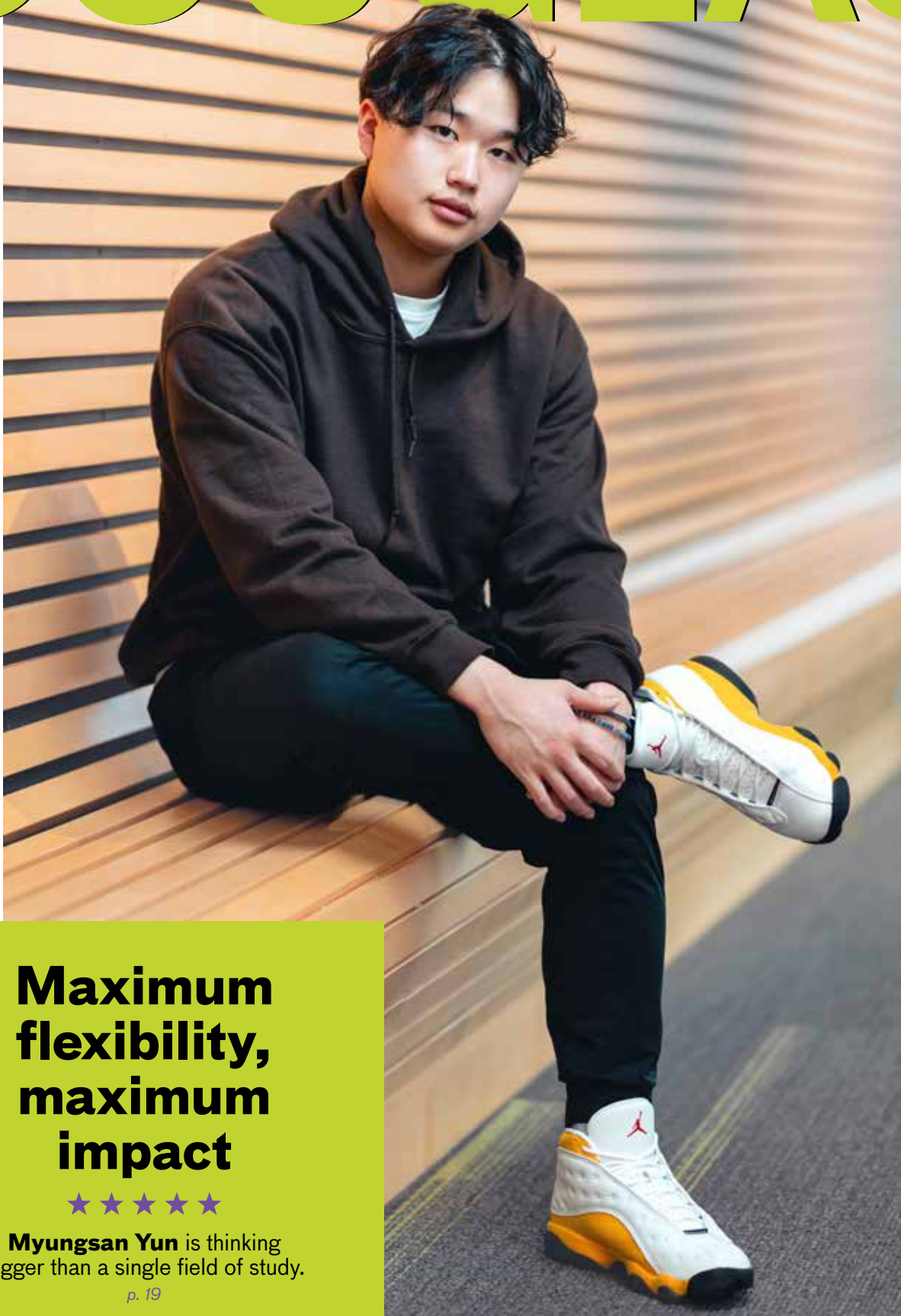


DOUGLAS



**Maximum
flexibility,
maximum
impact**



Myungsan Yun is thinking
bigger than a single field of study.

p. 19



Welcome to Douglas College

Our campuses, where we live, learn, work and play, are located on the unceded traditional territories of the Coast Salish Peoples of the qiqéyt (Qayqayt) and kʷikʷə́ləm (Kwkwetlem) First Nations.



"Salmon Woman Welcomes Salmon Home," a traditional Coast Salish welcome figure carved by artist Gerry Sheena, greets visitors as they arrive at the Coquitlam Campus. The salmon the figure is holding represents the kʷikʷə́ləm Nation. Kʷikʷə́ləm means "red fish up the river."

Contents

2
5 GREAT REASONS
TO CHOOSE DOUGLAS

3
PICK WHAT YOU WANT
TO STUDY

4
GETTING INTO DOUGLAS

5
HOW MUCH DOES IT
COST?

6
REACH OUR CAMPUSES
FAST

8
WHAT TO DO NEXT

9
GAIN A GLOBAL OUTLOOK

10
GET INVOLVED

12
GET A DEGREE. GET TO
WORK

14
START UNIVERSITY HERE

16
LAUNCH YOUR CAREER
ASAP

18
EXPLORE YOUR OPTIONS

20
NEW PROGRAMS

22
PROGRAM DETAILS

Image credits

Cover, pp. 13, 15, 17(r), 19: Eugene Doudko, ECU Photography
Inside front cover, pp. 8(m), 10(l), 11, 16(l), inside back cover: Jerald Walliser
pp. 2, 4, 5, 8(l), 10(r), 12, 16(m,r), 17(l), 18: David Denofreo, Black Opal Images
p. 8(r): Stock
p. 9: Submitted
p. 13: Brandon Hart

5 great reasons to choose DOUGLAS

Affordability

Save thousands of dollars in tuition as compared to other post-secondary institutions in Metro Vancouver.

Pathway to university

Students successfully transfer to SFU and UBC, as well as other top universities across Canada.

High interaction with professors

A typical class at Douglas has 35 students, compared with up to 500 at a university.

Hands-on experience

Apply what you learn through work placements, field schools, field trips and labs.

Convenient locations

Reach our campuses in 30 minutes or less by SkyTrain from most of Metro Vancouver.

PICK what you want to study

Here's everything that Douglas offers. For more information, including admission requirements and credentials offered, see pp. 21–28.

p. 22 APPLIED COMMUNITY STUDIES

Basic Occupational Education (VEST)
Behaviour Intervention
Career and Employment Preparation (VEST)
Child and Youth Care (includes degree)
Classroom and Community Support
Customer Service and Cashier Training (VEST)
Disability and Applied Behaviour Analysis
Early Childhood Education
Education Assistance and Inclusion
Indigenous Pathway
Sign Language Interpretation
Social Work (degree)
Therapeutic Recreation (includes degree)
Transitions (VEST)
Youth Justice

p. 23 COMMERCE AND BUSINESS ADMINISTRATION

Accounting (includes degree, PDD, PBD)
Accounting Studies (PDD)
Advanced Human Resource Management (PBD)
Advanced Supply Chain Management (PBD)
Business Law (PDD)
Commerce and Business Administration
Computer and Information Systems (PBD)
Computing Studies and Information Systems
Data Analytics (PDD)
Digital Marketing (PBD)
Economics
Finance (PBD)
Financial Analysis (PDD)
Financial Planning (PDD)
Financial Services (includes degree)
General Business
Global Banking and Economics (PDD)
Hospitality Management (includes PDD)
Hospitality Marketing (PDD)
Hospitality Services Management (PBD)
Human Resource Management (PDD)
Information and Communication Technology (PDD)
International Business Management (PDD)
International Supply Chain Management (PBD)
Legal Office Administration Management (includes degree)
Marketing (includes degree and PDD)
Project Management (PDD)
Sales (PDD)
Supply Chain Management (PDD)

p. 24 HEALTH SCIENCES

Community Mental Health Work
Health Care Assisting
Health Information Management (PBD)
Medical Office Administration
Nursing (Academic Foundations and degree)
Psychiatric Nursing (Academic Foundations and degree)

p. 25 HUMANITIES AND SOCIAL SCIENCES

Academic Foundations
Academic Foundations – Indigenous Studies
Anthropology
Arts
Asian Studies
Criminal Justice Studies
Criminology (includes degree)
Environmental Studies
Future Professional Pilots
Future Teachers
General Studies
Geography and the Environment
History
Legal Studies
Liberal Arts
Philosophy
Political Science
Psychology (includes degree)
Psychosocial Rehabilitation (GD)
Sociology

p. 26 LANGUAGE, LITERATURE AND PERFORMING ARTS

Communications
Creative Writing
English
College Preparatory English (ELLA)
English Upgrading
Gender, Sexualities and Women's Studies
Global Competency
Intercultural and International Studies
Linguistics
Modern Languages
Music (includes Basic Musicianship)
Music Technology
Music Therapy Studies, Foundation for Performing and Fine Arts
Professional Communication (PDD)
Stagecraft and Event Technology
Student Success
Theatre

p. 27 SCIENCE AND TECHNOLOGY

Biology
Chemistry
Computing Science
Earth and Environmental Sciences
Engineering and Fabrication Technologies
Engineering Foundations
Environmental Science
Geological Resources
Hearing Instrument Practitioner
Mathematics
Mathematics and Science Teaching (GD)
Mathematics Upgrading
Opticianry
Physical and Health Education (GD)
Physical Education and Coaching (degree)
Physics and Astronomy
Science
Sport Science
Veterinary Technology

VEST = Vocational Education and Skills Training
PDD = Post-degree diploma
PBD = Post-baccalaureate diploma
GD = Graduate diploma

For information on these programs, see p. 28.



Getting into Douglas

To be admitted to Douglas, you must meet **ONE** of the following criteria:

- You completed high school or equivalent education.
- You are one course short of high school graduation.
- You are 19 years old by the first day of classes.
- You are at least 17 years old on the first day of classes and have been out of high school for at least one year.
- You are a special needs student and have completed 12 years of study.

AND

You completed English Studies 12 or English First Peoples 12 with a C or better, or approved equivalent.

WHEN TO APPLY

You can apply up to 11 months before the semester you want to start in. We encourage you to apply early for the best chance of getting into the program you want.

HOW TO APPLY

Apply at apply.educationplannerbc.ca/douglas
We'll send you confirmation of your application by email and information about what to do next.



For the most up-to-date information on admissions, visit douglascollege.ca/admissions

How much does it **COST**?

Douglas offers some of the most affordable tuition rates in the province. If you take the first two years of your bachelor's degree here instead of at a research university, you'll save over \$4,700. Complete a four-year degree with us and you'll save even more.

	DOUGLAS	RESEARCH UNIVERSITY	YOU SAVE
Per course*	\$336	\$573	\$237
Per semester**	\$1,680	\$2,865	\$1,185
Per 2 years	\$6,720	\$11,460	\$4,740

*based on 1st- and 2nd-year 3-credit courses
**based on a 5-course semester

SCHOLARSHIPS, BURSARIES AND AWARDS

Douglas offers more than 250 scholarships, bursaries and awards every year. Some are based on financial need, while others recognize academic achievement, community involvement and other criteria.

ARE YOU IN GRADE 12?

If you're in Grade 12 and have applied to Douglas, you can apply for entrance awards and scholarships worth up to \$5,000 per year.

Application period: Oct. 1–April 15

If you miss the application deadline, don't worry. You can apply for many other scholarships, bursaries and awards at the start of each semester.

BUDGETING FOR YOUR FIRST YEAR

Tuition fees: \$3,360

Depending on your area of study

Study resources: \$2,200

Including textbooks and equipment (based on university-transfer programs)

Housing and food: \$9,200

Living in shared accommodations, away from home

Other expenses: \$3,600

Including cellular and internet services, clothes, recreation and personal care

TOTAL: \$18,360



ALL EXPENSES PAID



PATRICK SHEEPWASH

Associate Degree in Geology

When Patrick applied for college scholarships as a high school senior, he knew his resumé would be his golden ticket. Between athletics, camp counselling and volunteering with his MP, he was confident that he exceeded the criteria to earn funding.

"My grades were good, but where I shone brightest was with my involvement in the community," Patrick says. "Because of that, I felt like I'd be a more successful scholarship candidate at Douglas than at a university."

Patrick was right: He earned the President's Entrance Scholarship, worth \$5,000 per year for up to four years.

"Getting financial aid like this is a really good opportunity, and it's attainable if you work hard and leverage the things you're good at. It makes it worth your while to stay consistent in your studies."

Patrick's pathway:

High school > Associate Degree in Geology > Bachelor of Science in Earth Sciences (SFU)



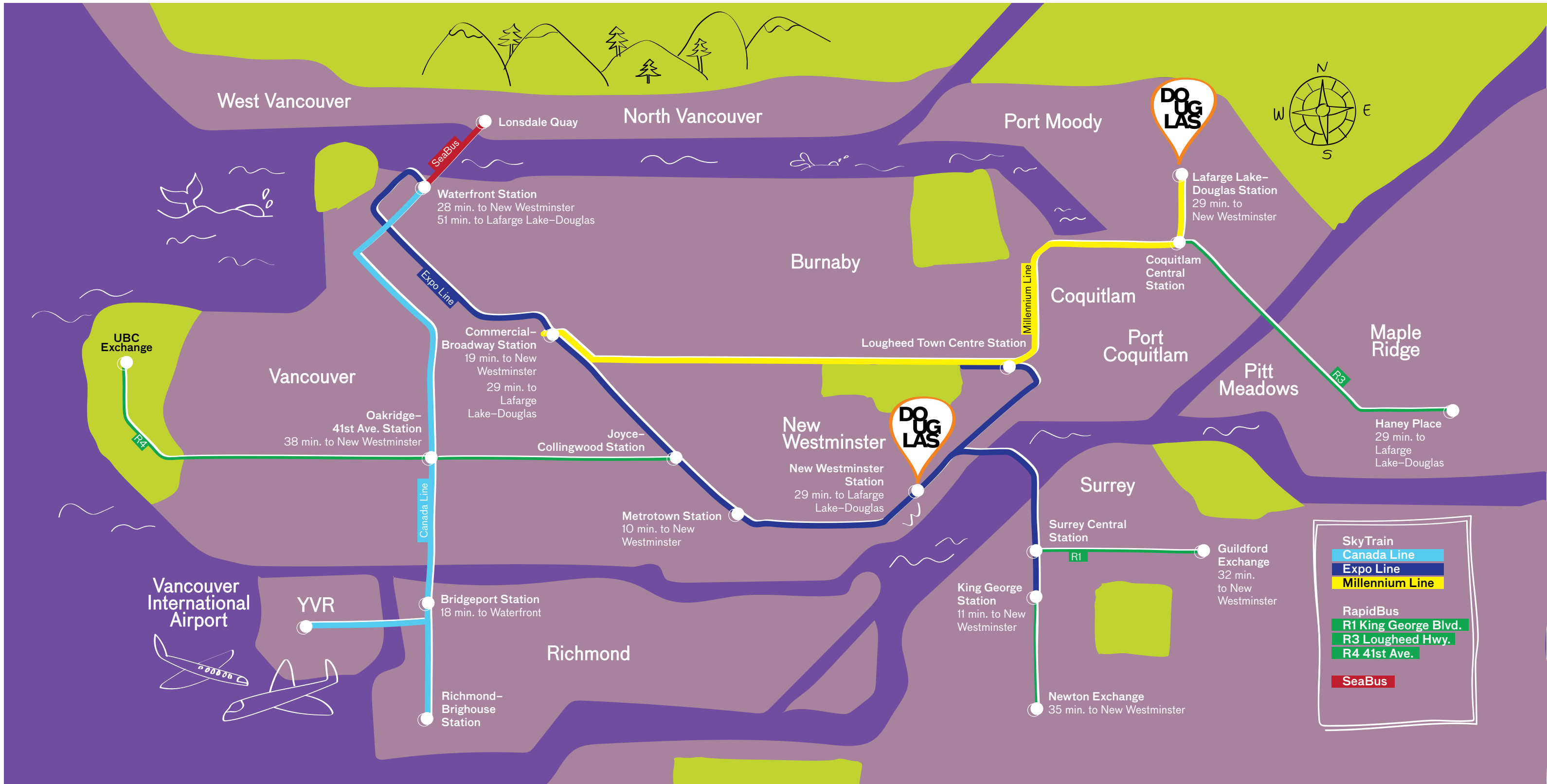
Visit douglascollege.ca/financial for info on how to apply, application deadlines and more.

REACH our campuses *FAST*

Get to our campuses in **30 minutes or less** by SkyTrain and/or RapidBus from most of Metro Vancouver. The SkyTrain ride between campuses takes just half an hour.

U-Pass BC

U-pass is included in your student fees. That means you get to ride public transit all over Metro Vancouver at no extra cost.



WHAT *to do* NEXT

NOT QUITE READY TO APPLY?
HAVE QUESTIONS?

KEEP UP with us!



CONTACT THE FUTURE STUDENTS' OFFICE

Get information about programs, admission requirements, how to apply and more. Our student advisors can also help you decide if Douglas College is the right fit for you.

information@douglascollege.ca

VISIT OUR CAMPUSES

Join an in-person campus tour and get a personalized advising session at the end. Or, take a virtual tour from the comfort of your own home.

douglascollege.ca/campus-tour

LEARN MORE ABOUT A SPECIFIC PROGRAM

Attend a free information session where you can connect directly with instructors and ask all the questions you want.

douglascollege.ca/info

CREATE YOUR OWN CUSTOM VIEWBOOK

Choose the programs, activities and services you're interested in and have a custom link delivered to your inbox.

customviewbook.douglascollege.ca/explore



GAIN a global OUTLOOK

STUDY ABROAD

As the world becomes more and more interconnected, employers are looking for people with international experiences and education. Broaden your career opportunities while immersing yourself in other cultures, languages and ways of life through study abroad programs or activities, events and workshops right on campus.

STUDY ABROAD OPPORTUNITIES

Field schools | Exchanges | Summer programs | Degree completion | International co-op

FINANCIAL SUPPORT FOR STUDYING ABROAD

Up to \$6,000 in scholarships is available. You may also be eligible for a student loan.



★★★★★
PEROLA ZHANG
Associate Degree in Science

"I spent last summer studying European business in Groningen, the Netherlands. Windmills, cheese, tulips, bicycles ... you name it, I got to experience it. Living in the Netherlands and learning about Dutch culture made going there one of the most fulfilling decisions I've ever made. Studying abroad sounds scary, but all it gave me was growth and joy."

Perola's pathway:
High school > Associate of Science > international exchange

Get Involved

Meet new people, learn more about yourself and get involved in College life.

STRONG START: NEW STUDENT ORIENTATION

Get ready for your first semester with workshops, a campus tour and much more.

EDGE

Three days at the beginning of the Fall and Winter semesters of fun-filled activities led by experienced student leaders.

LEADERSHIP TRAINING PROGRAM

Build self-confidence and learn skills such as effective communication, problem-solving and intercultural fluency.

STUDENT LEADERSHIP GROUPS

Join like-minded students to host activities, support new students and advocate for change by joining the Student Wellness Awareness Network, Student Services Advisory Committee, Student Ambassadors and more.

FITNESS CENTRES

Train, work out and take classes in yoga, Zumba, boot camp and more.

INTRAMURAL SPORTS

Stay active through six intramural sports: volleyball, basketball, table tennis, dodge ball, soccer and badminton.

RESEARCH DAYS

Showcase your hard work and discoveries while honing your presentation and public-speaking skills.

EVENTS

There's something for everyone: plays, concerts, art exhibitions, annual health fair, mindfulness workshops, career fairs and more.

CLUBS

Join a club that matches your interests – or start your own. Offered by the Douglas Students' Union.

VOLUNTEERING

Improve your leadership skills and gain a deeper connection to the Douglas College community.



★★★★★
DOYIN AGBAJE
Bachelor of Business
Administration in Management

A LEGACY OF ACTION

After a year of rotating between class, home and the library, Doyin wanted more. Volunteering led her to the college life she'd been hoping for.

"I felt at ease," Doyin says, describing her first stints getting involved on campus: working with the Douglas Students' Union (DSU) and Student Affairs and Services. "I could comfortably form relationships while doing good work. Discovering that pushed me to explore the rest of the College to find more of the same."

Doyin graduated with a Bachelor of Business Administration in Management and a glowing legacy of transformative action. Her volunteer portfolio includes terms on Education Council, the College Board and the DSU Board of Directors, where she played a key role in bringing the needs of international students to the table in policy discussions.

For her engagement with the College community, she received more than one award, including the Living Big Student Leader of the Year Award.

"Taking part in campus life made me more open to trying things outside my comfort zone," Doyin says. "I never thought I would be representing a whole body of students. But I got to be a voice for them, and that gave me confidence."

Doyin's pathway:

High school > Diploma in Commerce and Business Administration
> Bachelor of Business Administration in Management

JOIN A VARSITY SPORTS TEAM

The Douglas College Royals athletics program is the most successful program in the Canadian Collegiate Athletic Association. With eight men's and women's teams competing in eight sports, Douglas offers more opportunities to play sports than any other college in B.C. and is the only Canadian college whose baseball and softball teams compete in the U.S.-based Northwest Athletic Conference.

PICK YOUR GAME

Women's Basketball | Men's Basketball | Women's Volleyball |
Men's Volleyball | Women's Softball | Men's Baseball |
Women's Soccer | Men's Soccer



HOW TO BECOME A ROYAL

1. Contact our coaches to find out when camps are conducted for prospective athletes.
 2. Submit a Royals Recruiting Form online.
- Find out more: douglascollegeroyals.ca

ROYALS ALL-TIME HIGHLIGHTS

- 100 All-Canadian awards
- 68 PACWEST championship titles
- 42 CCAA national championship titles
- 24 PACWEST Player of the Year awards
- 20 PACWEST Coach of the Year awards
- 18 CCAA Academic All-Canadian awards
- 15 CCAA Player of the Year awards
- 6 All-American awards
- 6 CCAA Coach of the Year awards



Get a DEGREE. Get to WORK



Choose from 12 bachelor's degrees that combine classroom learning and opportunities to apply that learning in real workplaces before you graduate. You'll get the type of experience employers look for when hiring. Plus, you'll save thousands of dollars in tuition by getting your degree at Douglas instead of a research university.

ACCOUNTING

Bachelor of Business Administration

APPLIED CRIMINOLOGY

Bachelor of Arts; Bachelor of Arts – Honours

APPLIED PSYCHOLOGY

Bachelor of Arts; Bachelor of Arts – Honours

CHILD AND YOUTH CARE

Bachelor of Arts

FINANCIAL SERVICES

Bachelor of Business Administration

MARKETING

Bachelor of Business Administration

MANAGEMENT

Bachelor of Business Administration

NURSING

Bachelor of Science

PHYSICAL EDUCATION AND COACHING

PSYCHIATRIC NURSING

Bachelor of Science

SOCIAL WORK

THERAPEUTIC RECREATION



A DEGREE OF COMPASSION

★★★★★
KAYLEE REEDEL
*Bachelor of Science
in Psychiatric Nursing*

As someone who grew up seeing how mental health can shape a community, Kaylee heard the call to become a psychiatric nurse.

"I was raised in a place where trauma, including that of residential schools, has affected multiple generations. And the effects are evident," says Kaylee, who is a member of the toq qaymıx™ (Klahoose) First Nation. "That gave me the compassion to care for others, and an inside lens on their pain."

Kaylee left her hometown of Powell River and moved to the Lower Mainland for Douglas College's Bachelor of Science in Psychiatric Nursing, the primary psychiatric nursing program in B.C. for over 30 years.

"The program includes a lot of clinical experience, which prepared me to work," Kaylee says. "You take on the role of a nurse but with the support of your instructors and nurses onsite. Having all these mentors gives you so many different skills and perspectives."

By the time Kaylee graduated, in 2021, she was ready to launch her career. She's now spent a year at UBC Hospital, working in the neuropsychiatry unit, the BC Psychosis program and more. Every patient she cares for touches her heart.

"It's very rewarding to work in this field," she says. "Yes, sometimes patients don't get better. But when they do, when they heal and go on to continue their lives, it takes you back to how you felt on your first day in training. You think, 'This is why I got into it.'"

Eventually, Kaylee wants to return to her hometown to support her community. Another big goal of hers is to inspire other Indigenous youth to pursue psychiatric nursing. "I'm really pushing for young people from backgrounds like mine to enter this space and advocate for our fellow Indigenous people in the mental health system," Kaylee says. "I don't see a lot of Indigenous nurses, and we're needed."

Kaylee's pathway:

High school > Academic Foundations for Potential Psychiatric Nursing Applicants > Bachelor of Science in Psychiatric Nursing



★★★★★
JOSH RASALAN
Bachelor of Social Work

START university HERE

Did you know you can start your bachelor's degree at Douglas and then transfer your credits to a university to complete it?

By starting at Douglas, you'll graduate with the same credential as students who went straight to university, but with a few advantages:

You'll be joining a community

Get to know your classmates and receive one-on-one support from your professors. Douglas classes typically have 35 students, whereas first-year courses at research universities can have up to 500 students in a class.

You'll gain practical and life experience

Put what you learn in the classroom into practice through work placements, overseas field schools, labs, field trips and, for performing arts students, the stage.

You'll save money

Save over \$4,700 by taking the first two years of your degree at Douglas.

2

YEARS AT DOUGLAS

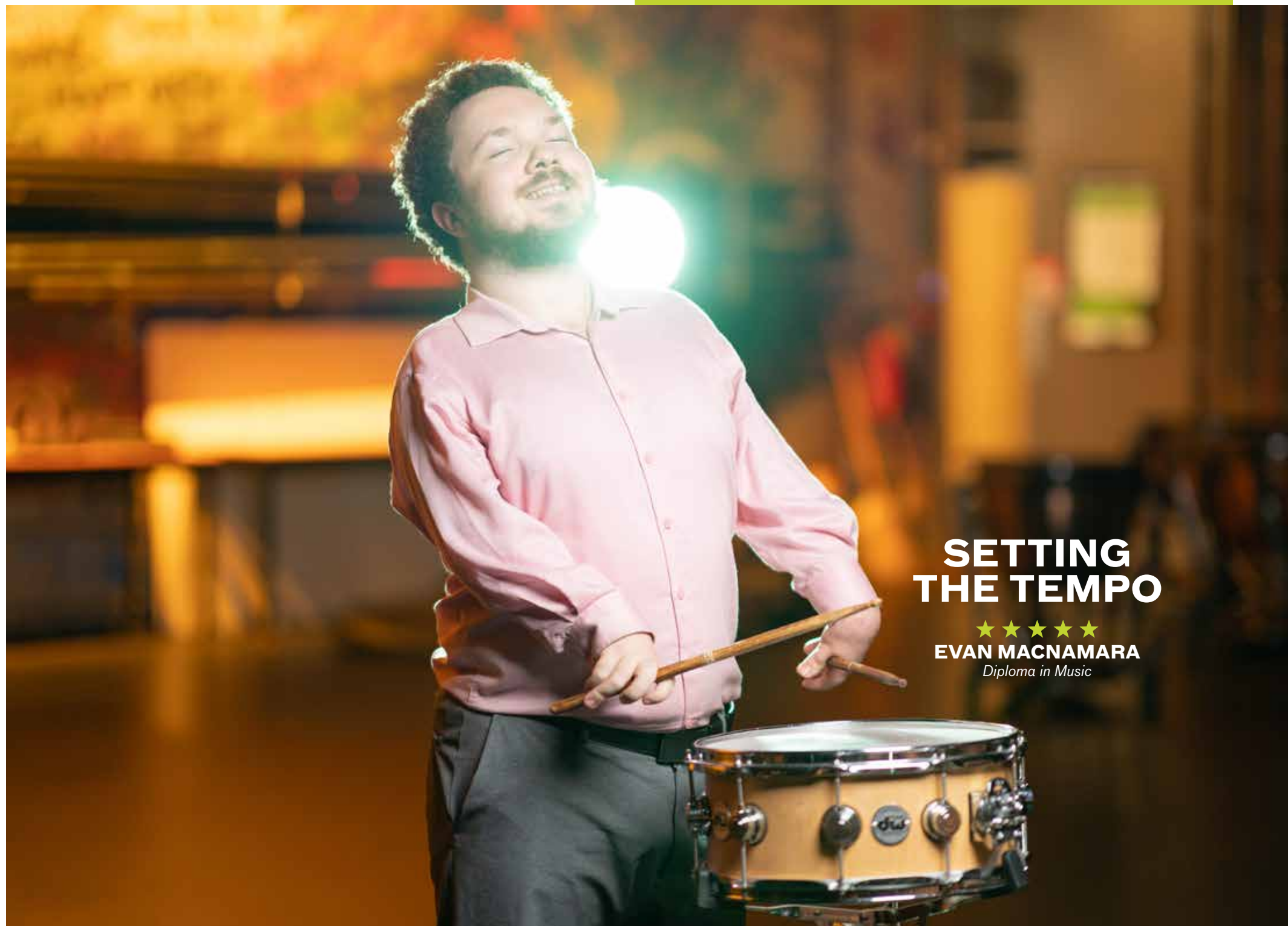
+

2

YEARS AT A RESEARCH UNIVERSITY

=

BACHELOR'S DEGREE



SETTING THE TEMPO



EVAN MACNAMARA

Diploma in Music

For Evan, drummer extraordinaire, the Diploma in Music was the perfect opening act. His Douglas College credential laid the groundwork for him to transfer to UBC's Bachelor of Music, one of the most prestigious music programs in Canada.

"Douglas was an approachable first step to get the education I wanted, because I only got interested in studying music later in life," Evan says. "I had the chance to build myself up until I was ready to impress any panel of judges, even in the most daunting of university auditions."

In Evan's first year, his talent as a percussionist earned him the Marg Beaudoin Memorial Music Scholarship, worth \$2,000. He even played at Douglas's Summer 2022 graduation, the College's first in-person ceremony since the COVID-19 pandemic began.

Evan ultimately crushed his UBC audition. One day, he wants to teach music himself; his Douglas instructors have inspired him to aim for college classrooms.

"All my instructors were super experienced. They've done everything," Evan says. "I'd love to be someone like that, ready to teach what I know to musicians starting out."

Evan's pathway:

High school > Diploma in Music > Bachelor of Music (UBC)

LAUNCH your career ASAP

ONE- AND TWO-YEAR PROGRAMS

Choose from more than 40 programs that will get you working in your chosen career in as little as one or two years. And if you decide that you want further education, many of our programs transfer into bachelor's degree programs at Douglas and at research universities across B.C.



Theatre



Opticianry



Engineering and Fabrication Technologies

DIPLOMAS 2 YEARS

Computing Science
Opticianry
Engineering and Fabrication Technologies
Geological Resources
Hearing Instrument Practitioner
Hospitality Management
Music
Stagecraft and Event Technology
Theatre
Therapeutic Recreation

AND MANY MORE

CERTIFICATES 1 YEAR

Accounting
Basic Musicianship
Communications
Criminal Justice Studies
Early Childhood Education
Health Care Assisting
Legal Office Administration
Medical Office Administration
Performing and Fine Arts

AND MANY MORE



Music

★ ★ ★ ★ ★
KAYLA GAMBLER
Diploma in Youth Justice

FOSTERING JUSTICE

Kayla wanted an education that would help her better support Indigenous youth facing the same challenges she once did: living in the city away from her community, and dealing with grief, trauma and substance use. She discovered the two-year Diploma in Youth Justice and hasn't looked back.

"I love learning how to help youth navigate the justice system," Kayla says. "And I appreciate the close-knit cohort I have in the program, which keeps me tied to a community on campus as I work toward my goals."

She also appreciates the hands-on learning that is built into the program. In her first year, she did a practicum with a youth outreach organization. Her team connected with Tri-Cities youth experiencing neglect, poverty, mental health struggles and

substance use. They worked daily – sometimes as late as midnight – to provide food, contraception and access to community-building programs.

That applied learning will serve Kayla well once she graduates. Her Diploma in Youth Justice – combined with her work experience – will open doors to careers working with children, youth and families in community support, crisis intervention, judicial administration and much more.

But Kayla wants to take that even further by completing a Bachelor of Social Work.

"When I started my diploma, I'd originally planned to graduate and focus on my career. But I continued my education to further build my skills, to do even better for the youth I want to work with."

Kayla's pathway:
High school > community support worker > Diploma in Youth Justice > Bachelor of Social Work



EXPLORE *your* options



ACADEMIC FOUNDATIONS AND GENERAL STUDIES

Not sure what you want to study? No problem. At Douglas, we offer two credentials that let you take a variety of courses before you settle on a program. You can discover what you like while accumulating credits. Once you have chosen a program, put your credits toward completing it – either at Douglas or at another college or university.

ACADEMIC FOUNDATIONS

Choose 10 courses in the arts and sciences. Designed to help you meet the requirements for many different programs, the Certificate in Academic Foundations earns you 30 credits you can easily transfer to university or put toward another credential at Douglas.

1
YEAR or **30**
CREDITS

GENERAL STUDIES

Explore courses in the humanities, sciences, performing arts and business. Graduate with a Diploma in General Studies and 60 credits which, if chosen carefully, can be transferred to university or another program at Douglas.

2
YEARS or **60**
CREDITS



MAXIMUM FLEXIBILITY

★★★★★
MYUNGSAN YUN
Diploma in General Studies

Myungsan chose his college by thinking bigger than a single field of study.

“I wanted to explore different subjects and figure out what was best for me before I settled on a goal,” he says. The Diploma in General Studies gave him the flexibility to do exactly that.

Myungsan took courses in psychology, sport science, math and much more. But it was computing science that captured his attention. Now, in his free time, he’s using his new computer skills to create helpful resources — from vlogs about life on campus to an app for tracking personal wellness – in collaboration with his classmates.

This experience, like others he had as a student in General Studies, showed him that no one can do everything alone.

“I understand the need for teamwork better now because I personally tried out so many different fields.”

As for Myungsan’s next steps? He’s set on completing a Bachelor of Science in Data Science through the SFU-Douglas Dual Degree program, where he’ll study at both institutions to complete his bachelor’s.

Myungsan’s pathway:
*High school > Diploma in General
Studies > Bachelor of Science in
Data Science (Douglas-SFU)*

NEW programs

Every year, Douglas adds new programs to help grads get careers in the ever-shifting labour market and enrich their credentials with different perspectives.

MARKETING BACHELOR OF BUSINESS ADMINISTRATION

4 YEARS

Become a marketing expert who helps businesses grow. Study market research, promotional strategy, buyer behaviour and more. In your last two years, focus on one of four concentrations: Digital Marketing and Communications Management; Hospitality Marketing; Professional Selling and Sales Management; or Trades Marketing.

Get experience

Develop marketing plans with local businesses and, in year two, do a practicum placement in which you'll work through the entire marketing process, from research to creating promotional campaigns.

Get hired

More than 5,000 marketing job openings are predicted for B.C. in the next 10 years.*

ACADEMIC FOUNDATIONS IN INDIGENOUS STUDIES CERTIFICATE

1 YEAR

Get an education that centres Indigenous culture, research and knowledge. You'll develop your active learning and critical-thinking skills through an Indigenous lens with your choice of courses in arts, sciences, community studies and business. This program welcomes Indigenous and non-Indigenous students.

Further your education

Transfer your credits to a bachelor's degree program at a university or a program at Douglas.

GLOBAL COMPETENCY CERTIFICATE

1 YEAR

Develop skills in intercultural communication and learn about sustainable economies, community action and more. Cap off your credential with an intercultural learning experience locally or abroad, such as a field school, exchange or volunteer opportunity. This program can be completed alongside your main credential or on its own.

Get hired

This certificate offers key skills for careers in international relations, refugee and immigrant services, global supply chain management and more.

COMPUTING SCIENCE DIPLOMA

2 YEARS

Turn your love for video games or computer programming into an exciting career. In year one, learn the basics of computer programming using C++ and Python. In year two, specialize in one of two streams: video game development or IT.

Get experience

Get paid to work for real companies before you graduate through Cooperative Education.

Get hired

Over 12,600 new jobs for computer programmers and interactive media developers are predicted for B.C. from now until 2031.*

Further your education

Transfer your first-year credits to a bachelor's degree program at a university.



"Raven Figures," created by Coast Salish artist Carrielynn Victor, is the focal point of the concourse at the New Westminster Campus. The mural depicts the student journey at Douglas, highlighting the knowledge that students gain and share through education.



*Job stats source:
B.C. Labour Market Outlook 2021

PROGRAM **de**tails

For the most up-to-date information, see
the Program and Course Catalogue at
douglascollege.ca/programs



APPLIED COMMUNITY STUDIES

All applicants must meet the Douglas College general admission requirements (see page 4) in addition to other criteria. Applicants who have completed 9 or more post-secondary credits must be in good academic standing (with a min. GPA of 1.5) for admission into any ACS program.

PROGRAM	LENGTH AND CREDENTIAL	ADMISSION CRITERIA See douglascollege.ca/programs for additional requirements.	EXPERIENTIAL LEARNING
BEHAVIOUR INTERVENTION (ONLINE – PT) Provide Behaviour Intervention therapy for children with autism.	Certificate: 3 semesters	60 hours relevant work/volunteer experience . 2 letters of reference . letter of intent . resumé . criminal record check (after admissions offer)	Practicum
CHILD AND YOUTH CARE (COQ – FT/PT) Engage with children and youth in community centres, schools and their homes. Learn how to build relationships and plan therapeutic interventions that support growth and positive change.	Bachelor of Arts Degree: 8 semesters Diploma: 4 semesters (online – PT only)	Resumé . 2 letters of reference . personal essay . interview may be required . criminal record check (after admissions offer)	Lab/field work; practicum
CLASSROOM AND COMMUNITY SUPPORT (COQ – FT) Create opportunities for children and adults with disabilities as an education assistant, job coach or community inclusion worker.	Diploma: 4 semesters Diploma with Behaviour Intervention specialty: 4 semesters	60 hours relevant work/volunteer experience . resumé . 2 letters of reference . letter of intent . post-secondary transcripts, as applicable . interview may be required . criminal record check (after admissions offer)	
DISABILITY AND APPLIED BEHAVIOUR ANALYSIS (COQ – PT) Analyze behaviour and create strategies to help people with disabilities, including autism, develop functional skills.	Advanced Certificate: 3 semesters	Graduate or bachelor's degree with a min. GPA of 2.0 or be enrolled in 3rd or 4th year of a bachelor's degree program at a recognized institution with a min. GPA of 2.33 or completed a 2-year diploma or 60 credits from a recognized institution with min. GPA 2.50 or equivalent . 2 letters of reference . letter of intent . resumé	
EARLY CHILDHOOD EDUCATION (COQ – FT/PT) Ignite the flame of learning; discover how to create a positive environment for children to learn and play together.	Diploma – Special Needs: 4 semesters Certificate: 3 semesters	20 hours volunteer/paid work experience with children in licensed group ECE setting . 2 references . must be 18 by Dec. 31 in year of entry . criminal record check (after admissions offer)	Lab/practicum
EDUCATION ASSISTANCE AND INCLUSION (COQ – FT/PT) Promote the development, education and well-being of children, youth and adults with disabilities.	Certificate: 2 semesters FT; 3 semesters PT	60 hours related work/volunteer experience . 2 letters of reference . letter of intent . resumé . criminal record check (after admissions offer)	Practicum
INDIGENOUS PATHWAY (COQ – PT) Supportive cohort for Indigenous students and allies to learn to work with Indigenous children, youth and families. Courses are taught by Indigenous and non-Indigenous faculty with Elder support.	Pathway into Child and Youth Care diploma	Must be interested in Indigenous teachings and culture . criminal record check (after admissions offer) . interview may be required	
SIGN LANGUAGE INTERPRETATION (COQ – FT) Provide communication between hearing and Deaf people in various settings in a rapidly expanding field.	Diploma: 4 semesters plus 1 Summer course	ASL proficiency . weekend selection day . criminal record check (after admissions offer) . successful completion of ENGL 1130 or CMNS 1115 or equivalent . successful completion of an ASL and Deaf Studies Program or successful completion of the following courses or equivalent: CMNS 1104 or 1216; CMNS 1125 or PEFA 1100; INTR 1101; INTR 1102; INTR 1103; 1 first-year LING course; SOCI 1125	Practicum
SOCIAL WORK (COQ – FT) Get the skills and training to advocate for social justice and help people from diverse populations resolve problems in their everyday lives for better quality of life.	Bachelor's Degree: 6 semesters	30 credits university-transferable (non-social work) courses, incl. PSYC 1130 and 3 ENGL credits . 100 hours related work/volunteer experience in human services . 2 letters of reference . resumé . letter of intent . criminal record check (after admissions offer) . interview	Practicum
THERAPEUTIC RECREATION (COQ – FT/PT) Learn to use recreation and leisure as a pathway to well-being for older adults, people with disabilities and anyone with a condition that inhibits their quality of life.	Bachelor's Degree: 8 semesters Diploma: 4 semesters PT online diploma: 6 semesters	Letter of intent . criminal record check (after admissions offer) . resumé . 2 letters of reference . department application form	Degree: practicum; internship Diploma: 2 practicums
YOUTH JUSTICE (COQ – FT) Help at-risk youth and those in the justice system. This program is a collaboration of child and youth care and criminology, with coursework focused for youth justice practitioners.	Diploma: 4 semesters	Must be 19 by Nov. 1 in year of entry . selection event . letter of intent . reference form(s) . criminal record check (after admissions offer)	Practicum

COMMERCE AND BUSINESS ADMINISTRATION

All applicants must meet the Douglas College general admission requirements (see page 4) in addition to other criteria.

PROGRAM	LENGTH AND CREDENTIAL	ADMISSION CRITERIA See douglascollege.ca/programs for additional requirements.	EXPERIENTIAL LEARNING
ACCOUNTING (NW – FT/PT) Prepares grads for junior- to intermediate-level accounting positions and partially satisfies the requirements for admission into the CPA Professional Education Program (PEP).	Diploma: 2 years Certificate: 1 year	General admission requirements . Note: Foundations of Math 11 with a grade of C (or equivalent) is required for some first-year courses. It is recommended, but not required, to complete this course prior to admission.	Diploma: Co-op eligible
BUSINESS ADMINISTRATION – ACCOUNTING (NW – FT/PT) Prepare for positions in financial, tax or management accounting and auditing, and for the Chartered Professional Accountant (CPA) designation. Electives and work experience component offered.	Bachelor's Degree: 8 semesters	Foundations of Math 11, Principles of Math 11 or Pre-calculus 11 with a min. grade of C	Co-op eligible; 500 hrs work experience (not provided by program)
BUSINESS ADMINISTRATION – FINANCIAL SERVICES (NW – FT/PT) Career-based degree program in financial services and administration. Qualifies you to challenge the Level 1 Certified Financial Planning Exam if appropriate elective courses taken.	Bachelor's Degree: 8 semesters	Foundations of Math 11, Principles of Math 11 or Pre-calculus 11 with a min. grade of C	Co-op eligible; 500 hrs work experience (not provided by program)
BUSINESS ADMINISTRATION – MANAGEMENT (NW – FT/PT) Launch a career in business management. Choose from seven concentrations: Financial Services Management; Hospitality Management; Human Resource Management; International Business Management; Project Management; Supply Chain Management; Trades Management.	Bachelor's Degree: 8 semesters	Foundations of Math 11, Principles of Math 11 or Pre-calculus 11 with a min. grade C . see Catalogue for additional requirements for Trades Management concentration	Co-op eligible; 500 hrs work experience (not provided by program); internship/practicum (optional)
BUSINESS ADMINISTRATION – MARKETING (NW – FT/PT) Learn fundamental business and marketing concepts. Choose from four concentrations: Digital Marketing and Communications Management; Trades Marketing; Hospitality Marketing; Professional Selling and Sales Management.	Bachelor's Degree: 8 semesters	Foundations of Math 11, Principles of Math 11 or Pre-calculus 11 with a min. grade C	Co-op eligible; 500 hrs work experience (not provided by program); practicum
COMMERCE AND BUSINESS ADMINISTRATION (NW – FT/PT) Introduction to a variety of business and academic subjects.	Diploma: 4 semesters	General admission requirements . Note: Foundations of Math 11 with a grade of C (or equivalent) is required for some first-year courses. It is recommended, but not required, to complete this course prior to admission . see Catalogue for courses requiring Foundations of Math or Pre-calculus 11 with a min. grade of C	Co-op eligible
COMPUTING STUDIES AND INFORMATION SYSTEMS (NW – FT/PT) Get ready for a career in the booming IT sector with courses in system and networking concepts, programming languages and business courses, giving you a well-rounded set of skills that apply to a variety of careers.	Diploma: 4 semesters	Foundations of Math 11 or Pre-calculus 11 with a min. grade of C	Co-op eligible
ECONOMICS (NW – FT/PT) Study economics, banking, trade, managerial economics and the Canadian economy.	Assoc. of Arts Degree (specialty): 4 semesters	General admission requirements . Note: Foundations of Math 11 with a grade of C (or equivalent) is required for some first-year courses. It is recommended, but not required, to complete this course prior to admission . see Catalogue for courses requiring Foundations of Math 11 or Pre-calculus 11 with a min. grade of C	Co-op eligible
FINANCIAL SERVICES (NW – FT/PT) Prepare for a career in the finance industry; preparation for Canadian Securities Course (CSC) exam.	Diploma: 4 semesters	General admissions requirements . Note: Foundations of Math 11 with a grade of C (or equivalent) is required for some first-year courses. It is recommended, but not required, to complete this course prior to admission . see Catalogue for courses requiring Foundations of Math 11 or Pre-calculus 11 with a min. grade of C	Co-op eligible
GENERAL BUSINESS (NW/COQ – FT/PT) Core courses plus career specialties in General Business and Business Administration.	Diploma: 4 semesters Certificate: 2 semesters	General admission requirements . Note: Foundations of Math 11 with a grade of C (or equivalent) is required for some first-year courses. It is recommended, but not required, to complete this course prior to admission.	Co-op eligible; internship/practicum
HOSPITALITY MANAGEMENT (NW/COQ – FT/PT) Prepare for a career in hospitality at home or abroad, or transfer to university degree programs in business, marketing, hospitality or tourism.	Diploma: 4 semesters	Foundations of Math 11 or pre-calculus 11 with a min. grade of C–	Field trips; 500 hrs work experience (not provided by program)
LEGAL OFFICE ADMINISTRATION (COQ – FT/PT) Become a Legal Office Assistant. Take courses in legal terminology, court systems, corporate law, legal record-keeping and more.	Certificate: 2 semesters	English 11 with a min. grade of C	Practicum
MANAGEMENT (NW/COQ – FT/PT) Develop fundamental business skills and learn concepts in managing business development, operations and human resources.	Diploma: 4 semesters	General admission requirements . Note: Foundations of Math 11 with a grade of C (or equivalent) is required for some first-year courses. It is recommended, but not required, to complete this course prior to admission . see Catalogue for individual course prerequisites	Co-op eligible; internship/practicum (optional)
MARKETING (NW – FT/PT) Develop and enhance the skills needed to succeed in customer relations, sales, promotion, marketing research and strategy in the global business market.	Diploma: 4 semesters Certificate: 2 semesters	General admission requirements . Note: Foundations of Math 11 with a grade of C (or equivalent) is required for some first-year courses. It is recommended, but not required, to complete this course prior to admission . see Catalogue for courses requiring Foundations of Math or Pre-calculus 11 with a min. grade of C	Co-op eligible; practicum

HEALTH SCIENCES

All applicants must meet the Douglas College general admission requirements (see page 4) in addition to other criteria.

PROGRAM	LENGTH AND CREDENTIAL	ADMISSION CRITERIA See douglascollege.ca/programs for additional requirements.	EXPERIENTIAL LEARNING
ACADEMIC FOUNDATIONS FOR POTENTIAL NURSING APPLICANTS (NW/COQ – FT/PT) Prepare to enter the Bachelor of Science in Nursing program with this set of 10 university-transfer courses.	Certificate: 2 semesters	English 12 or English Studies 12 or English First Peoples 12 with a min. grade of B or substitution . Biology 11 or 12 or Life Sciences 11 or Anatomy and Physiology 12 with a min. grade of B or substitution . Foundations of Math 11 or 12 with a min. grade of B or substitution	Lab
ACADEMIC FOUNDATIONS FOR POTENTIAL PSYCHIATRIC NURSING APPLICANTS (NW/COQ – FT/PT) Prepare to enter the Bachelor of Science in Psychiatric Nursing program with this set of 10 university-transfer courses.	Certificate: 2 semesters	English 12 or English Studies 12 or English First Peoples 12 with a min. grade of B or substitution . Biology 11 or 12 or Life Sciences 11 or Anatomy and Physiology 12 with a min. grade of B or substitution . Foundations of Math 11 or 12 with a min. grade of B or substitution	Lab
COMMUNITY MENTAL HEALTH WORK (COQ – FT) Assist people with mental health issues to maximize their independence. Learn the principles of recovery using Psychosocial Rehabilitation (PSR).	Certificate: 15 weeks	CPR Level C . TB test . current hepatitis B vaccination . criminal record check . FOODSAFE Level 1 . see Catalogue for English requirement	Practicum; clinical experience; lab
HEALTH CARE ASSISTING (COQ – FT) Learn how to care for people with physical care needs and/or dementia.	Certificate: 30 weeks	CPR Level C . TB test . current hepatitis B vaccination . criminal record check . FOODSAFE Level 1 . see Catalogue for English requirement	Practicum; clinical experience; lab
MEDICAL OFFICE ADMINISTRATION (COQ – FT/PT) Support medical practitioners as a Medical Office Assistant in private or public health-care settings. Take courses in medical office and clinical procedures, medical terminology, patient record management, scheduling, billing and more.	Certificate: 2 semesters	English 11 with a min. grade of C	Practicum; lab
NURSING (COQ – FT) Become a registered nurse caring for people of all ages and families in hospital and community health settings. Courses focus on health promotion, relational practice and trauma-informed practice/services.	Bachelor of Science Degree: 8 semesters (includes 2–3 semesters of Academic Foundations plus 6 semesters of nursing content)	Completion of Academic Foundations for Potential Nursing Applicants or equivalent with a min. grade of C+ in each course and a cumulative GPA of 2.67 . see Catalogue for specific courses, limitations and GPA requirements	Clinical practice; practicum; lab; preceptorship
PSYCHIATRIC NURSING (COQ – FT) Become a registered psychiatric nurse caring for people and families with mental health and/or addiction challenges in hospital and community health settings. Courses focus on health promotion, relational practice and trauma-informed practice/services.	Bachelor of Science Degree: 8 semesters (includes 2–3 semesters of Academic Foundations plus 6 semesters of psychiatric nursing content)	Completion of Academic Foundations for Potential Psychiatric Nursing Applicants or equivalent with a min. grade of C+ in each course . see Catalogue for specific courses and additional entry information	Clinical practice; 360-hr preceptorship/ practicum; lab
PSYCHIATRIC NURSING - DEGREE COMPLETION (ONLINE – PT) Self-paced program for students who have already completed a Diploma in Psychiatric Nursing.	Bachelor of Science Degree: 33 credits	See Catalogue	

HUMANITIES AND SOCIAL SCIENCES

All applicants must meet the Douglas College general admission requirements (see page 4) in addition to other criteria.

PROGRAM	LENGTH AND CREDENTIAL	ADMISSION CRITERIA See douglascollege.ca/programs for additional requirements.	EXPERIENTIAL LEARNING
ACADEMIC FOUNDATIONS (NW/COQ – FT/PT) Take a variety of arts and sciences courses based on your interests. Designed to transfer maximum credits to university or a program at Douglas.	Certificate: 2 semesters	General admission requirements	Lab (science)
ACADEMIC FOUNDATIONS - INDIGENOUS STUDIES (NW/COQ – FT/PT) Develop academic skills in a learning community that honours Indigenous traditional knowledge and cultures. Designed to transfer maximum credits to university or a program at Douglas.	Certificate: 2 semesters	General admission requirements	Lab (science)
ANTHROPOLOGY (NW/COQ – FT/PT) The study of humanity, including archaeology, cultural histories and specific societies.	Assoc. of Arts Degree (specialty): 4 semesters	General admission requirements	Co-op eligible; volunteer research opportunities
ARTS (NW/COQ – FT/PT) Allows you to transfer to a university and enter the third year of a four-year bachelor's degree program.	Assoc. of Arts Degree: 4 semesters	General admission requirements	Co-op eligible
ARTS – LIMITED ENROLMENT (NW/COQ – FT) For students coming in the Fall Semester directly from high school. Provides priority registration, allowing greater access to courses.	Assoc. of Arts Degree or Assoc. of Arts Degree (specialty): 4 semesters	English 12 with a min. grade of B . Foundations of Math 11 or Pre-calculus 11 with a min. grade of C . average GPA 70%, including one other Grade 12 academic course on interim transcript . currently enrolled in Grade 12	Co-op eligible
ASIAN STUDIES (NW/COQ – FT/PT) Explore topics in religion, history, politics and culture; develop an intermediate proficiency in Mandarin or Japanese.	Assoc. of Arts Degree: 4 semesters	General admission requirements	Co-op eligible; field trips
CRIMINAL JUSTICE STUDIES (NW/COQ – FT/PT) Delve into the field of criminal justice to increase your knowledge of the structures and processes in the Canadian criminal justice system.	Certificate: 2 semesters	General admission requirements	
CRIMINOLOGY (NW/COQ – FT/PT) The study of criminal behaviour, and the criminal justice system, including policing, courts, law and corrections.	Assoc. of Arts Degree (specialty): 4 semesters Diploma: 4 semesters	General admission requirements	Co-op eligible; practicum
CRIMINOLOGY – APPLIED (NW/COQ – FT/PT) Launch a career in criminal justice, with specializations in specific areas: Community and Institutional Practice; Crime Analysis and Prevention; Legal Studies.	Bachelor of Arts Degree: 8 semesters Honours Degree: 8 semesters	Degree: Liberal Arts or Science Diploma or Associate of Arts (or equivalent 60 credits of post-secondary coursework) with a min. 2.0 GPA or equivalent with a min. 2.0 GPA . CRIM 1100, 1150, 1160, 2140, 2254, 2260 plus CRIM 1120 or 1170 plus PSYC 2300 or MATH 1160 . Honours degree: 90 credits with a min. 3.33 GPA . CRIM 3325, PSYC 3300 or 3301 with a min. grade of B . agreement form from Criminology faculty who will supervise honours thesis	Co-op eligible; practicum; field trips; work experience; professional development Honours degree: Above plus self-directed research
ENVIRONMENTAL STUDIES (NW/COQ – FT/PT) The study of human impacts on the environment, environmental law, philosophy, sociology, policy and ecosystems.	Assoc. of Arts Degree (specialty): 4 semesters	General admission requirements	Co-op eligible; field experience; lab
FUTURE PROFESSIONAL PILOTS (NW – FT/PT) Get the credential needed to obtain a Commercial Pilot License. Flight training is provided by the Professional Flight Centre at Boundary Bay Airport.	Assoc. of Arts Degree (specialty): 4 semesters	General admission requirements	Flight training (provided by Professional Flight Centre)
FUTURE TEACHERS (NW/COQ – FT/PT) Get the courses required for admission to the teacher training program (PDP) at SFU and to the Faculty of Education at UBC.	Assoc. of Arts Degree (specialty): 4 semesters	General admission requirements	Co-op eligible
GENERAL STUDIES (NW/COQ – FT/PT) Explore your individual goals and interests without committing to a specific path; take courses from a number of different faculties.	Diploma: 4 semesters	General admission requirements	
GEOGRAPHY AND THE ENVIRONMENT (NW/COQ – FT/PT) The physical, cultural and biological features of the Earth. Includes climatology, geomorphology, maps and human geography.	Assoc. of Arts Degree (specialty): 4 semesters	General admission requirements	Co-op eligible; field trips; field schools; lab
HISTORY (NW/COQ – FT/PT) Investigate and critically analyze historic themes and specific eras.	Assoc. of Arts Degree (specialty): 4 semesters	General admission requirements	Co-op eligible; field trips; field school
LEGAL STUDIES (NW/COQ – FT/PT) The study of law as an academic discipline, including business, criminal and public law, and principles of legal reasoning.	Assoc. of Arts Degree (specialty): 4 semesters Diploma: 4 semesters	General admission requirements	Co-op eligible
LIBERAL ARTS (NW/COQ – FT/PT) Concentrated study in the arts and humanities. Provides a breadth of intellectual and academic experience.	Diploma: 4 semesters	General admission requirements	
PHILOSOPHY (NW/COQ – FT/PT) The critical examination of the issues that lie at the foundation of all human knowledge, choice and action.	Assoc. of Arts Degree (specialty): 4 semesters	General admission requirements	Co-op eligible; field trips; self-directed research
POLITICAL SCIENCE (NW/COQ – FT/PT) The study of political systems and ideologies and their relationships to people and each other.	Assoc. of Arts Degree (specialty): 4 semesters	General admission requirements	Co-op eligible; field trips
PSYCHOLOGY (NW/COQ – FT/PT) The scientific study of behaviour and mental processes through case studies, correlational research, surveys, experiments and statistical analysis.	Assoc. of Arts Degree – Pre-Bachelor's: 4 semesters Assoc. of Arts Degree (specialty): 4 semesters	Assoc. Degree Pre-Bachelor's: Foundations or Principles of Math 11 with a min. grade of C . Assoc. Degree and UT: see Catalogue for courses requiring Foundations of Math 11 with a min. grade of C	Co-op eligible
PSYCHOLOGY – APPLIED (NW/COQ – FT/PT) Specialize in areas where psychology is being applied in the workplace: Pre-counselling; Psychosocial Rehabilitation; Forensic Psychology; Leadership and Management; Applied Theory and Research; Disability and Applied Behaviour Analysis.	Bachelor of Arts Degree: 8 semesters Honours degree: 8 semesters	Associate of Arts degree or equivalent with a min. 2.0 GPA (3.33 GPA for Honours degree) PSYC 1100 + 1200 with a min. grade of C . PSYC 2300 + 2301, plus 2 of PSYC 2315, 2341 or 2360 with a min. grade of C . letter of intent (Honours degree only)	Practicum (Psychosocial Rehabilitation); field experience; lab Honours: Above plus self-directed research
SOCIOLOGY (NW/COQ – FT/PT) The study of society and social structures and their effects on human interactions and life.	Assoc. of Arts Degree (specialty): 4 semesters	General admission requirements	Co-op eligible; volunteer research opportunities

LANGUAGE, LITERATURE AND PERFORMING ARTS

Except for the Basic Musicianship program, all applicants must meet the Douglas College general admission requirements (see page 4) in addition to other criteria.

PROGRAM	LENGTH AND CREDENTIAL	ADMISSION CRITERIA	EXPERIENTIAL LEARNING
BASIC MUSICIANSHIP (NW – FT/PT) Study music and gain musical knowledge and skills. (See Music for university transfer options.)	Certificate: 2 semesters	General admission requirements, without Language Proficiency requirement • interview	
COLLEGE PREPARATORY ENGLISH (ELLA) (NW – FT/PT) Develop the English-language skills needed to succeed in your post-secondary studies.	Certificate: 1 semester	General admission requirements, without Language Proficiency requirement • assessment to determine appropriate course levels • open to Canadian citizens, permanent residents and refugees	Workshops; community activities; lab
COMMUNICATIONS (NW/COQ – FT/PT) Workplace writing, oral presentations, interpersonal and intercultural communications, and media studies.	Assoc. of Arts Degree (specialty): 4 semesters Certificate: 2 semesters	General admission requirements	Co-op eligible
CREATIVE WRITING (NW/COQ – FT/PT) Explore the writing of poetry, plays, short fiction, speculative fiction, screenwriting, children's literature, memoir and more.	Assoc. of Arts Degree (specialty): 4 semesters	General admission requirements	Co-op eligible
ENGLISH (NW/COQ – FT/PT) Read and explore great writing – fiction, poetry, plays, memoir – and learn to write strong prose.	Assoc. of Arts Degree (specialty): 4 semesters	General admission requirements	Co-op eligible
ENGLISH UPGRADING (NW/COQ) Literacy, academic upgrading and college preparation.	Courses	General admission requirements, without the Language Proficiency Requirement • assessment testing	
GENDER, SEXUALITIES AND WOMEN'S STUDIES (NW/COQ – FT/PT) Explore the psychological, sociological, economic and other factors that contribute to gender roles in society.	Assoc. of Arts Degree (specialty): 4 semesters	General admission requirements	Co-op eligible; field trips
GLOBAL COMPETENCY (NW/COQ – FT/PT) Build skills in critical thinking, intercultural communication and more to succeed in the global workplace.	Certificate: self-paced	General admission requirements	International exchange, field school or other opportunity, or local volunteer opportunity
INTERCULTURAL AND INTERNATIONAL STUDIES (NW/COQ – FT/PT) Study intercultural communications and a new language, as well as international economic, cultural and political issues and philosophies.	Assoc. of Arts Degree (specialty): 4 semesters	General admission requirements	Co-op eligible
LINGUISTICS (NW/COQ) Learn how languages develop and work to reflect and inform cultures.	1st-year university transfer courses	General admission requirements	
MODERN LANGUAGES (NW/COQ – FT/PT) Gain language skills in Mandarin, French, German, Japanese and Spanish. Language and culture studies in Japanese, French, Spanish and American Sign Language.	Assoc. of Arts Degree (specialty): 4 semesters	Language assessment • see Catalogue for course prerequisites	Co-op eligible; lab
MUSIC (NW – FT) Study music in specialized facilities and performing venues. Prepare for a bachelor's degree in music or the arts.	Assoc. of Arts Degree (specialty): 4 semesters Diploma: 4 semesters	Assoc. of Arts: General admission requirements Diploma: English 12 or equivalent with min. grade of C • audition • theory assessment • aural skills assessment • interview	Co-op eligible; performances; work experience
MUSIC TECHNOLOGY (NW – FT) Learn MIDI, sequencing and synthesis, audio recording, music for film, music scoring, studio setup and maintenance, and music ensembles; take various music business courses, including marketing and career development.	Diploma: 4 semesters	Audition • music literacy assessment • music technology assessment	Performances; work experience; lab; studio
MUSIC THERAPY STUDIES, FOUNDATION FOR (NW – FT/PT) Complete foundational studies in Music and Psychology, and prepare to transfer to an audition-based degree program in Music Therapy.	Diploma: 4 semesters	Audition • theory assessment • singing and aural skills assessment • interview	Field experience; performances; work experience
PERFORMING AND FINE ARTS (NW/COQ – FT/PT) Explore options in the performing and fine arts; take academic courses with performance options.	Assoc. of Arts Degree (specialty): 4 semesters Certificate: 2 semesters	General admission requirements • Note: Many first-year music courses require an audition, or a performance or music theory test • see catalogue for specific course requirements	Assoc. Degree: Co-op eligible
STAGECRAFT AND EVENT TECHNOLOGY (NW – FT/PT) Learn audio, lighting, painting and construction techniques in a professional environment for a career in theatre, TV, film, special events and more.	Diploma: 4 semesters	General admission requirements	Work experience
STUDENT SUCCESS (NW/COQ) Academic and personal skills for college success.	Courses	General admission requirements	
THEATRE (NW – FT) Gain skills and confidence as you get professional training and education in speech, movement, acting and theatre history.	Assoc. of Arts Degree (specialty): 4 semesters Diploma: 4 semesters	General admission requirements • audition (diploma only)	Assoc. Degree: Co-op eligible; performances Diploma: Performances

SCIENCE AND TECHNOLOGY

All applicants must meet the Douglas College general admission requirements (see page 4) in addition to other criteria.

PROGRAM	LENGTH AND CREDENTIAL	ADMISSION CRITERIA	EXPERIENTIAL LEARNING
BIOLOGY (NW/COQ – FT/PT) The study of living things: human anatomy and physiology, general biology, microbiology, pathophysiology, marine biology, cell biology, biochemistry, genetics, ecology, zoology and evolution.	Assoc. of Science Degree (specialty): 4 semesters	General admission requirements	Co-op eligible; lab
CHEMISTRY (NW/COQ – FT/PT) The science of matter: organic, physical, inorganic, analytical and environmental chemistry; chemical energies and dynamics.	Assoc. of Science Degree (specialty): 4 semesters	General admission requirements	Co-op eligible; lab
COMPUTING SCIENCE (NW – FT/PT) Prepare for careers in computer programming or game development, or for transfer to a university computing science program to complete a bachelor's degree.	Diploma with Game Development or General stream: 4 semesters Certificate: 2 semesters	Pre-calculus 12 with a min. grade of B or approved substitution	Diploma: Co-op eligible; lab; practicum Certificate: lab
EARTH AND ENVIRONMENTAL SCIENCES (NW/COQ – FT/PT) Composition, structure, origin and evolution of the Earth; history of its biota and past climates and environments; geological hazards.	Assoc. of Science Degree (specialty): 4 semesters	General admission requirements	Co-op eligible; lab
ENGINEERING AND FABRICATION TECHNOLOGIES (NW – FT) Get the academic and applied knowledge that will allow you to transfer to a university engineering degree program and help prepare you for a career in engineering.	Diploma: 2 years	Chemistry 12 with min. grade of C+ • Physics 12 with min. grade of C • Pre-Calculus 12 with min. grade of B or acceptable substitution	Lab – 3D printers, laser cutters, robotics kits
ENGINEERING FOUNDATIONS (NW – FT) Take the first-year courses that will allow you to transfer to a university program to complete a bachelor's degree.	Certificate: 1 year	English Studies 12, Physics 12, Chemistry 12, Pre-Calculus 12 all with a min. grade of B or acceptable substitution.	
ENVIRONMENTAL SCIENCE (NW/COQ – FT/PT) Study ecosystem composition and mapping, global environmental change and environmental hazards.	Assoc. of Science Degree (thematic focus): 4 semesters	General admission requirements	Co-op eligible; field school; field trips; lab; self-directed research
GEOLOGICAL RESOURCES (NW/COQ – FT/PT) Gain the skills and knowledge for a technical career in mineral exploration, mining and related areas. Study rocks, field skills, mapping, mining and mineral exploration processes; learn technical skills.	Diploma: 2 years	Pre-calculus 11 or Foundations of Math 11 with a min. grade of C • Chemistry 11 with min. grade of C	Co-op eligible; field school; field trips; lab
HEARING INSTRUMENT PRACTITIONER (COQ - FT) Learn how to test people's hearing, dispense and program hearing aids, and counsel patients on managing ongoing hearing loss.	Diploma: 2 years	Foundations of Math 11 or Pre-calculus 11 with a min. grade of C • info session/hearing clinic tour attendance • proof of high school graduation or completion of 6 credits of university-transferable courses • criminal record check (after admissions offer)	3 practicums; lab
MATHEMATICS (NW/COQ – FT/PT) Study algebra, calculus, math for teachers, statistics, quantitative methods, etc.	Assoc. of Science Degree (specialty): 4 semesters	General admission requirements • Note: Many first-year courses have specific prerequisites, and an assessment test may be required to determine placement	Co-op eligible
MATHEMATICS UPGRADING (NW/COQ) Study numeracy, academic upgrading and college preparation courses.	Courses	General admission requirements without the Language Proficiency Requirement • assessment testing	
OPTICIANRY (COQ – FT) Combine eye care, business and fashion. Work in ophthalmology, optometry or opticianry practices, or start an eye-care business serving the public.	Diploma: 4 semesters plus practicums	Any Math 11 with a min. grade of C– • facility tour completion (conducted following information session) • proof of high school graduation or completion of 6 credits of university transferable courses • criminal record check (after admissions offer)	4 practicums; lab
PHYSICAL EDUCATION AND COACHING (NW/COQ – FT/PT) Enter a dynamic career in physical and health education teaching, recreation administration, kinesiology, coaching, or health and wellness. Concentrations in kinesiology and health promotion.	Bachelor's Degree: up to 8 semesters	High school students: apply to Sport Science in first year Second-year criteria: 24 credits, GPA 2.33 including 9 Sport Science or equivalent credits; BIOL 1109 or equivalent; 3 credits university transfer English, Foundations of Math 11 or Pre-Calculus 11 with a min. grade of C • 2 letters of reference • criminal record check (after admissions offer)	Co-op eligible; field work; short and long-term field experience; lab; service learning; creative and physical experience; course-based experiential learning; self-directed study opportunity
PHYSICS AND ASTRONOMY (NW/COQ – FT/PT) Study mechanics, heat, light, electricity, thermodynamics, the study of stars and constellations in the night sky; telescopes, and the solar system.	1st and 2nd-year university transfer courses	General admission requirements	Lab
SCIENCE (NW/COQ – FT/PT) Allows you to transfer to a university and enter the third year of a four-year bachelor's degree program.	Assoc. of Science Degree: 4 semesters	General admission requirements	Co-op eligible; lab
SPORT SCIENCE (NW/COQ – FT/PT) The study of sport, physical education, recreation and coaching. Three possible diplomas: Kinesiology, Health and Recreation, Interdisciplinary.	Diploma: 4 semesters	High school students: English Studies 12 with a min. grade of C or equivalent, Foundations of Math 11 or Pre-Calculus 11 with a min. grade of C or equivalent, 3 additional Grade 11 or 12 courses with a min. grade of C, 2 references. Post-secondary students (min. 12 credits): English Studies 12 with a min. grade of C or equivalent, Foundations of Math 11 or Pre-Calculus 11 with a min. grade of C or equivalent, min. post-secondary GPA of 2.33, 2 references	Short- and long-term field experience; lab; field observation; creative and physical experience; course-based experiential learning
VETERINARY TECHNOLOGY (COQ – FT) Become a veterinary technologist, working as a nurse in veterinary hospitals and other animal-related settings.	Diploma: 4 semesters	Chemistry 11 and Biology 11 with a min. grade of C+ • Grade 12 Science with a min. grade of C+ • Pre-calculus 11 or Foundations of Math 11 with a min. grade of C (or equivalent) • entrance questionnaire • min. 80 hours veterinary-related volunteer work • possible interview • 2 letters of reference • must be 18 by the last day of year of entry	Co-op eligible; fieldwork; practicums; field trips; lab

VOCATIONAL EDUCATION AND SKILLS TRAINING

Douglas College offers Vocational Education and Skills Training (VEST) programs to people with barriers to education and employment. Programs help students identify career paths, develop work skills or move on to additional education or employment. Learn more at douglascollege.ca/vest.

PROGRAM	LENGTH AND CREDENTIAL	ADMISSION CRITERIA
BASIC OCCUPATIONAL EDUCATION (NW – FT) Vocational training in Electronic and General Assembly, Food Services, Retail and Business Services for students with barriers to education and employment.	Certificate: varies	Interview • Note: programs are self-paced and include work experience • Retail and Business Services intake in September and January; all other programs have year-round entry
CAREER AND EMPLOYMENT PREPARATION (COQ – FT/PT) Exploration of career interests through investigation and work experience for students with barriers to education and employment.	Certificate: 1 semester	Interview
CUSTOMER SERVICE AND CASHIER TRAINING (COQ – FT) Training for jobs in retail and customer service for students with barriers to employment.	Certificate: 1 semester	Interview
TRANSITIONS (NW – FT) Assists students with special needs or learning difficulties in making successful exits from secondary school into training or workplace settings.	Certificate: 16 weeks	Must be in Grade 12 or 12+ and in Completion Certificate (Evergreen) program • priority given to students from School District 43



You must have a bachelor's degree to apply.

POST-DEGREE PROGRAMS

POST-DEGREE DIPLOMAS (ONE YEAR)

- Accounting
- Accounting Studies
- Business Law
- Data Analytics
- Financial Analysis
- Financial Planning
- Global Banking and Economics
- Hospitality Management
- Hospitality Marketing
- Human Resource Management
- Information and Communication Technology
- International Business Management
- Marketing
- Professional Communication
- Project Management
- Sales
- Supply Chain Management

POST-BACCALAUREATE DIPLOMAS (TWO YEARS)

- Accounting
- Advanced Human Resource Management
- Advanced Supply Chain Management
- Computer and Information Systems
- Finance
- Health Information Management
- Hospitality Services Management
- International Supply Chain Management

GRADUATE DIPLOMAS (ONE OR TWO YEARS)

- Mathematics and Science Teaching
- Psychosocial Rehabilitation
- Physical and Health Education